

Datasheet for ABIN635947

**anti-Tyrosinase-Related Protein 1 antibody (Middle Region)**[Go to Product page](#)**2** Images

## Overview

Quantity:	100 µL
Target:	Tyrosinase-Related Protein 1 (TYRP1)
Binding Specificity:	Middle Region
Reactivity:	Human, Mouse, Rat
Host:	Rabbit
Clonality:	Polyclonal
Conjugate:	This Tyrosinase-Related Protein 1 antibody is un-conjugated
Application:	Western Blotting (WB)

## Product Details

Immunogen:	TYRP1 antibody was raised using the middle region of TYRP1 corresponding to a region with amino acids NDPIFVLLHTFTDAVFDEWLRRYNADISTFPLENAPIGHNRYQNMVFPWP
Specificity:	TYRP1 antibody was raised against the middle region of TYRP1
Purification:	Affinity purified

## Target Details

Target:	Tyrosinase-Related Protein 1 (TYRP1)
Alternative Name:	TYRP1 ( <a href="#">TYRP1 Products</a> )
Background:	TYRP1 catalyses the oxidation of 5,6-dihydroxyindole-2-carboxylic acid (DHICA) into indole-5,6-quinone-2-carboxylic acid. It may regulate or influence the type of melanin synthesized.

## Target Details

---

Molecular Weight: 61 kDa (MW of target protein)

## Application Details

---

Application Notes: WB: 1 µg/mL  
Optimal conditions should be determined by the investigator.

Comment: TYRP1 Blocking Peptide, catalog no. 33R-6659, is also available for use as a blocking control in assays to test for specificity of this TYRP1 antibody

Restrictions: For Research Use only

## Handling

---

Format: Lyophilized

Reconstitution: Lyophilized powder. Add distilled water for a 1 mg/mL concentration of TYRP1 antibody in PBS

Concentration: Lot specific

Buffer: PBS

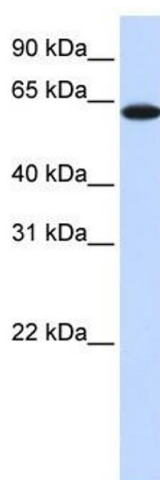
Handling Advice: Avoid repeated freeze/thaw cycles.  
Dilute only prior to immediate use.

Storage: 4 °C/-20 °C

Storage Comment: Store at 2-8 °C for short periods. For longer periods of storage, store at -20 °C.

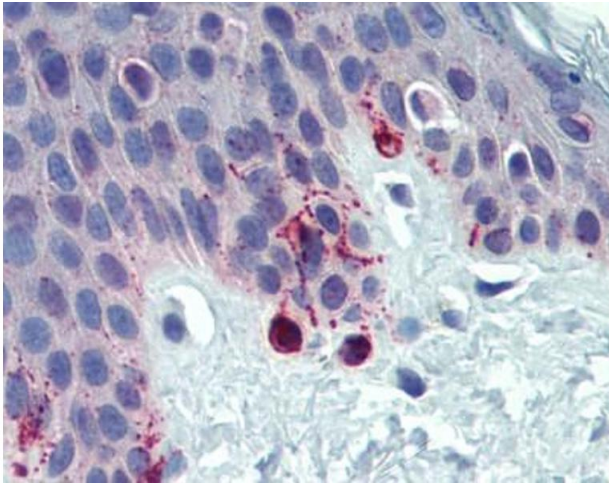
## Images

---



### Western Blotting

**Image 1.** TYRP1 antibody used at 1 ug/ml to detect target protein.



### Immunohistochemistry

**Image 2.** TYRP1 antibody was used for immunohistochemistry at a concentration of 4-8 ug/ml. Magnification is at 400X