

Datasheet for ABIN635955
anti-ST3GAL1 antibody (C-Term)



[Go to Product page](#)

1 Image

Overview

Quantity:	100 µL
Target:	ST3GAL1
Binding Specificity:	C-Term
Reactivity:	Human, Rat
Host:	Rabbit
Clonality:	Polyclonal
Conjugate:	This ST3GAL1 antibody is un-conjugated
Application:	Western Blotting (WB)

Product Details

Immunogen:	ST3 GAL1 antibody was raised using the C terminal of ST3 AL1 corresponding to a region with amino acids YVFDNWLQGHGRYPSTGILSVIFSMHVCDEVDLYGFGADSKGNWHHYWEN
Specificity:	ST3 GAL1 antibody was raised against the C terminal of ST3 AL1
Purification:	Affinity purified

Target Details

Target:	ST3GAL1
Alternative Name:	ST3GAL1 (ST3GAL1 Products)
Background:	ST3GAL1 is a type II membrane protein that catalyzes the transfer of sialic acid from CMP-sialic acid to galactose-containing substrates. It is normally found in the Golgi but can be proteolytically processed to a soluble form. Correct glycosylation of ST3GAL1 protein may be

Target Details

critical to its sialyltransferase activity. This protein, which is a member of glycosyltransferase family 29, can use the same acceptor substrates as does sialyltransferase 4B.

Molecular Weight: 39 kDa (MW of target protein)

Pathways: [Glycosaminoglycan Metabolic Process](#)

Application Details

Application Notes: WB: 1 µg/mL
Optimal conditions should be determined by the investigator.

Comment: ST3GAL1 Blocking Peptide, catalog no. 33R-10274, is also available for use as a blocking control in assays to test for specificity of this ST3GAL1 antibody

Restrictions: For Research Use only

Handling

Format: Lyophilized

Reconstitution: Lyophilized powder. Add distilled water for a 1 mg/mL concentration of ST0 AL1 antibody in PBS

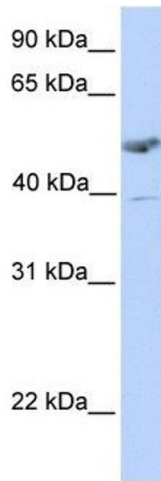
Concentration: Lot specific

Buffer: PBS

Handling Advice: Avoid repeated freeze/thaw cycles.
Dilute only prior to immediate use.

Storage: 4 °C/-20 °C

Storage Comment: Store at 2-8 °C for short periods. For longer periods of storage, store at -20 °C.



Western Blotting

Image 1. ST3GAL1 antibody used at 1 ug/ml to detect target protein.