

Datasheet for ABIN635966
anti-ERLIN1 antibody (N-Term)



[Go to Product page](#)

1 Image

Overview

Quantity:	100 µL
Target:	ERLIN1
Binding Specificity:	N-Term
Reactivity:	Human, Mouse, Rat
Host:	Rabbit
Clonality:	Polyclonal
Conjugate:	This ERLIN1 antibody is un-conjugated
Application:	Western Blotting (WB)

Product Details

Immunogen:	ERLIN1 antibody was raised using the N terminal of ERLIN1 corresponding to a region with amino acids KNVPCGTSGGVMIYIDRIEVVNMLAPYAVFDIVRNYTADYDKTLIFNKIH
Specificity:	ERLIN1 antibody was raised against the N terminal of ERLIN1
Purification:	Affinity purified

Target Details

Target:	ERLIN1
Alternative Name:	ERLIN1 (ERLIN1 Products)
Background:	Erlin-1 belongs to the band 7/mec-2 family. Erlin-1 and erlin-2 are novel members of the prohibitin family of proteins that define lipid-raft-like domains of the ER.

Target Details

Molecular Weight: 39 kDa (MW of target protein)

Application Details

Application Notes: WB: 1 µg/mL
Optimal conditions should be determined by the investigator.

Comment: ERLIN1 Blocking Peptide, catalog no. 33R-4577, is also available for use as a blocking control in assays to test for specificity of this ERLIN1 antibody

Restrictions: For Research Use only

Handling

Format: Lyophilized

Reconstitution: Lyophilized powder. Add distilled water for a 1 mg/mL concentration of ERLIN1 antibody in PBS

Concentration: Lot specific

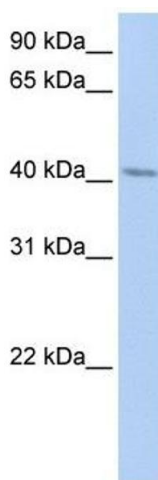
Buffer: PBS

Handling Advice: Avoid repeated freeze/thaw cycles.
Dilute only prior to immediate use.

Storage: 4 °C/-20 °C

Storage Comment: Store at 2-8 °C for short periods. For longer periods of storage, store at -20 °C.

Images



Western Blotting

Image 1. ERLIN1 antibody used at 1 ug/ml to detect target protein.