

Datasheet for ABIN635992  
**anti-QPCTL antibody (Middle Region)**



[Go to Product page](#)

1 Image

## Overview

Quantity:	100 µL
Target:	QPCTL
Binding Specificity:	Middle Region
Reactivity:	Human, Mouse, Rat
Host:	Rabbit
Clonality:	Polyclonal
Conjugate:	This QPCTL antibody is un-conjugated
Application:	Western Blotting (WB)

## Product Details

Immunogen:	QPCTL antibody was raised using the middle region of QPCTL corresponding to a region with amino acids QLLFLDGEEALKEWGPKDSLYGSRHLAQLMESIPHSPGPTRIQAIELFML
Specificity:	QPCTL antibody was raised against the middle region of QPCTL
Purification:	Affinity purified

## Target Details

Target:	QPCTL
Alternative Name:	QPCTL ( <a href="#">QPCTL Products</a> )
Background:	QPCTL is a single-pass membrane proteinPotential. It belongs to the glutaminyl-peptide cyclotransferase family. The exact function of QPCTL remains unknown.

## Target Details

---

Molecular Weight: 43 kDa (MW of target protein)

## Application Details

---

Application Notes: WB: 1 µg/mL  
Optimal conditions should be determined by the investigator.

Comment: QPCTL Blocking Peptide, catalog no. 33R-7631, is also available for use as a blocking control in assays to test for specificity of this QPCTL antibody

Restrictions: For Research Use only

## Handling

---

Format: Lyophilized

Reconstitution: Lyophilized powder. Add distilled water for a 1 mg/mL concentration of QPCTL antibody in PBS

Concentration: Lot specific

Buffer: PBS

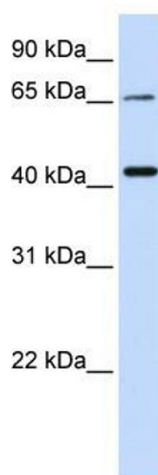
Handling Advice: Avoid repeated freeze/thaw cycles.  
Dilute only prior to immediate use.

Storage: 4 °C/-20 °C

Storage Comment: Store at 2-8 °C for short periods. For longer periods of storage, store at -20 °C.

## Images

---



### Western Blotting

**Image 1.** QPCTL antibody used at 1 ug/ml to detect target protein.