

Datasheet for ABIN636012  
**anti-MANEA antibody (Middle Region)**



[Go to Product page](#)

1 Image

## Overview

Quantity:	100 µL
Target:	MANEA
Binding Specificity:	Middle Region
Reactivity:	Human, Mouse, Rat
Host:	Rabbit
Clonality:	Polyclonal
Application:	Western Blotting (WB)

## Product Details

Immunogen:	MANEA antibody was raised using the middle region of MANEA corresponding to a region with amino acids KVTFHIEPYSNRDDQNMVKYIIDKYGNHHPAFYRYKTKTGNALPMFYV
Specificity:	MANEA antibody was raised against the middle region of MANEA
Purification:	Affinity purified

## Target Details

Target:	MANEA
Alternative Name:	MANEA ( <a href="#">MANEA Products</a> )
Background:	N-glycosylation of proteins is initiated in the endoplasmic reticulum (ER) by the transfer of the preassembled oligosaccharide glucose-3-mannose-9-N-acetylglucosamine-2 from dolichyl pyrophosphate to acceptor sites on the target protein by an oligosaccharyltransferase complex.
Molecular Weight:	54 kDa (MW of target protein)

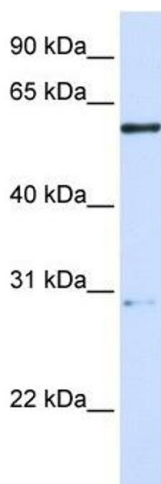
## Application Details

Application Notes:	WB: 1 µg/mL Optimal conditions should be determined by the investigator.
Comment:	MANEA Blocking Peptide, catalog no. 33R-4723, is also available for use as a blocking control in assays to test for specificity of this MANEA antibody
Restrictions:	For Research Use only

## Handling

Format:	Lyophilized
Reconstitution:	Lyophilized powder. Add distilled water for a 1 mg/mL concentration of MANEA antibody in PBS
Concentration:	Lot specific
Buffer:	PBS
Handling Advice:	Avoid repeated freeze/thaw cycles. Dilute only prior to immediate use.
Storage:	4 °C/-20 °C
Storage Comment:	Store at 2-8 °C for short periods. For longer periods of storage, store at -20 °C.

## Images



### Western Blotting

**Image 1.** MANEA antibody used at 1 ug/ml to detect target protein.