

Datasheet for ABIN636017
anti-GLT8D2 antibody (C-Term)



[Go to Product page](#)

1 Image

Overview

Quantity:	100 µL
Target:	GLT8D2
Binding Specificity:	C-Term
Reactivity:	Human, Mouse, Rat
Host:	Rabbit
Clonality:	Polyclonal
Conjugate:	This GLT8D2 antibody is un-conjugated
Application:	Western Blotting (WB)

Product Details

Immunogen:	GLT8 D2 antibody was raised using the C terminal of GLT8 2 corresponding to a region with amino acids IRHLGWNPDARYSEHFLQEAKLLHWNGRHKPWDFPSVHNDLWESWVFPDP
Specificity:	GLT8 D2 antibody was raised against the C terminal of GLT8 2
Purification:	Affinity purified

Target Details

Target:	GLT8D2
Alternative Name:	GLT8D2 (GLT8D2 Products)
Background:	GLT8D2 belongs to the glycosyltransferase 8 family. The exact function of it remains unknown.
Molecular Weight:	40 kDa (MW of target protein)

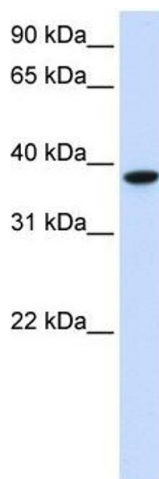
Application Details

Application Notes:	WB: 1 µg/mL Optimal conditions should be determined by the investigator.
Comment:	GLT8D2 Blocking Peptide, catalog no. 33R-4131, is also available for use as a blocking control in assays to test for specificity of this GLT8D2 antibody
Restrictions:	For Research Use only

Handling

Format:	Lyophilized
Reconstitution:	Lyophilized powder. Add distilled water for a 1 mg/mL concentration of GLT0 2 antibody in PBS
Concentration:	Lot specific
Buffer:	PBS
Handling Advice:	Avoid repeated freeze/thaw cycles. Dilute only prior to immediate use.
Storage:	4 °C/-20 °C
Storage Comment:	Store at 2-8 °C for short periods. For longer periods of storage, store at -20 °C.

Images



Western Blotting

Image 1. GLT8D2 antibody used at 1 ug/ml to detect target protein.