

Datasheet for ABIN636028 **anti-LAMP3 antibody (N-Term)**



[Go to Product page](#)

1 Image

Overview

Quantity:	100 µL
Target:	LAMP3
Binding Specificity:	N-Term
Reactivity:	Human
Host:	Rabbit
Clonality:	Polyclonal
Conjugate:	This LAMP3 antibody is un-conjugated
Application:	Western Blotting (WB)

Product Details

Immunogen:	LAMP3 antibody was raised using the N terminal of LAMP3 corresponding to a region with amino acids YSQPTAAATVQDIKKPVQQPAKQAPHQTLAARFMDGHITFQTAATVKIPT
Specificity:	LAMP3 antibody was raised against the N terminal of LAMP3
Purification:	Affinity purified

Target Details

Target:	LAMP3
Alternative Name:	LAMP3 (LAMP3 Products)
Background:	LAMP3 might change the lysosome function after the transfer of peptide-MHC class II molecules to the surface of dendritic cells. LAMP3 overexpression is associated with an enhanced metastatic potential and may be a prognostic factor for cervical cancer.

Target Details

Molecular Weight: 44 kDa (MW of target protein)

Application Details

Application Notes: WB: 1 µg/mL
Optimal conditions should be determined by the investigator.

Comment: LAMP3 Blocking Peptide, catalog no. 33R-10246, is also available for use as a blocking control in assays to test for specificity of this LAMP3 antibody

Restrictions: For Research Use only

Handling

Format: Lyophilized

Reconstitution: Lyophilized powder. Add distilled water for a 1 mg/mL concentration of LAMP3 antibody in PBS

Concentration: Lot specific

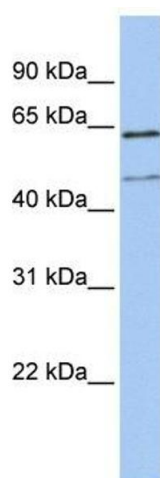
Buffer: PBS

Handling Advice: Avoid repeated freeze/thaw cycles.
Dilute only prior to immediate use.

Storage: 4 °C/-20 °C

Storage Comment: Store at 2-8 °C for short periods. For longer periods of storage, store at -20 °C.

Images



Western Blotting

Image 1. LAMP3 antibody used at 1 ug/ml to detect target protein.