

Datasheet for ABIN636040

anti-Receptor Accessory Protein 1 antibody (C-Term)[Go to Product page](#)**1** Image

Overview

Quantity:	100 µL
Target:	Receptor Accessory Protein 1 (REEP1)
Binding Specificity:	C-Term
Reactivity:	Human, Rat
Host:	Rabbit
Clonality:	Polyclonal
Conjugate:	This Receptor Accessory Protein 1 antibody is un-conjugated
Application:	Western Blotting (WB)

Product Details

Immunogen:	REEP1 antibody was raised using the C terminal of REEP1 corresponding to a region with amino acids ERLRSFSMQDLTTIRGDGAPAPSGPPPPGSGRASGKHGQPKMSRSASESA
Specificity:	REEP1 antibody was raised against the C terminal of REEP1
Purification:	Affinity purified

Target Details

Target:	Receptor Accessory Protein 1 (REEP1)
Alternative Name:	REEP1 (REEP1 Products)
Background:	REEP1 belongs to the DP1 family and may enhance the cell surface expression of odorant receptors.

Target Details

Molecular Weight: 22 kDa (MW of target protein)

Application Details

Application Notes: WB: 1 µg/mL
Optimal conditions should be determined by the investigator.

Comment: REEP1 Blocking Peptide, catalog no. 33R-2704, is also available for use as a blocking control in assays to test for specificity of this REEP1 antibody

Restrictions: For Research Use only

Handling

Format: Lyophilized

Reconstitution: Lyophilized powder. Add distilled water for a 1 mg/mL concentration of REEP1 antibody in PBS

Concentration: Lot specific

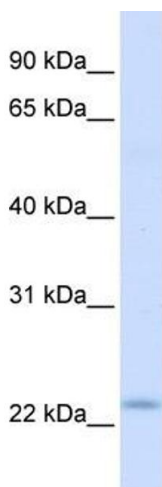
Buffer: PBS

Handling Advice: Avoid repeated freeze/thaw cycles.
Dilute only prior to immediate use.

Storage: 4 °C/-20 °C

Storage Comment: Store at 2-8 °C for short periods. For longer periods of storage, store at -20 °C.

Images



Western Blotting

Image 1. REEP1 antibody used at 1 ug/ml to detect target protein.