

Datasheet for ABIN636050  
**anti-GDE1 antibody (N-Term)**



[Go to Product page](#)

2 Images

## Overview

Quantity:	100 µL
Target:	GDE1
Binding Specificity:	N-Term
Reactivity:	Human, Mouse, Rat, Dog
Host:	Rabbit
Clonality:	Polyclonal
Conjugate:	This GDE1 antibody is un-conjugated
Application:	Western Blotting (WB), Immunohistochemistry (IHC)

## Product Details

Immunogen:	GDE1 antibody was raised using the N terminal Of Gde1 corresponding to a region with amino acids LRVFSFEPVPSRALQVLKPRDRISAIAHRGGSHDAPENTLAAIRQAANK
Specificity:	GDE1 antibody was raised against the N terminal Of Gde1
Purification:	Affinity purified

## Target Details

Target:	GDE1
Alternative Name:	GDE1 ( <a href="#">GDE1 Products</a> )
Background:	GDE1 has glycerophosphoinositol phosphodiesterase activity. It has little or no activity towards glycerophosphocholine. GDE1 activity can be modulated by G-protein signaling pathways.

## Target Details

---

Molecular Weight: 38 kDa (MW of target protein)

## Application Details

---

Application Notes: WB: 0.5 µg/mL, IHC: 4-8 µg/mL  
Optimal conditions should be determined by the investigator.

Comment: GDE1 Blocking Peptide, catalog no. 33R-5401, is also available for use as a blocking control in assays to test for specificity of this GDE1 antibody

Restrictions: For Research Use only

## Handling

---

Format: Lyophilized

Reconstitution: Lyophilized powder. Add distilled water for a 1 mg/mL concentration of GDE1 antibody in PBS

Concentration: Lot specific

Buffer: PBS

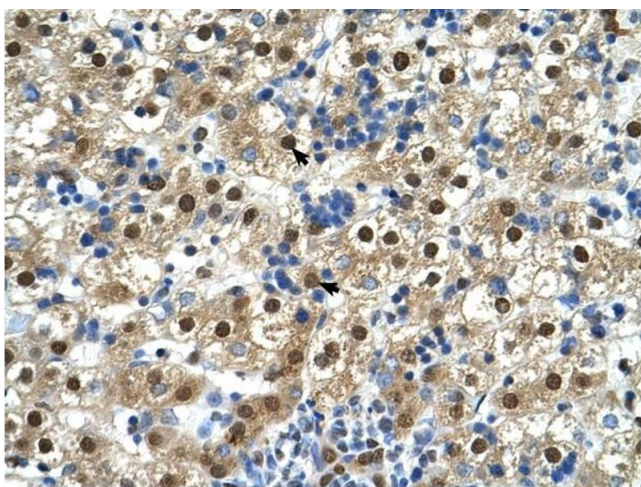
Handling Advice: Avoid repeated freeze/thaw cycles.  
Dilute only prior to immediate use.

Storage: 4 °C/-20 °C

Storage Comment: Store at 2-8 °C for short periods. For longer periods of storage, store at -20 °C.

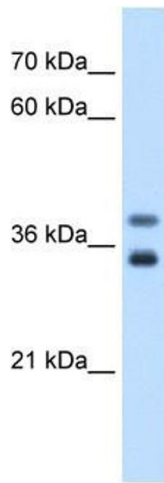
## Images

---



### Immunohistochemistry

**Image 1.** GDE1 antibody was used for immunohistochemistry at a concentration of 4-8 µg/ml to stain Hepatocytes (arrows) in Human Liver. Magnification is at 400X



### Western Blotting

**Image 2.** GDE1 antibody used at 0.5 ug/ml to detect target protein.