

Datasheet for ABIN636052  
**anti-IMPG2 antibody (C-Term)**



[Go to Product page](#)

1 Image

## Overview

Quantity:	100 µL
Target:	IMPG2
Binding Specificity:	C-Term
Reactivity:	Human, Mouse, Rat
Host:	Rabbit
Clonality:	Polyclonal
Conjugate:	This IMPG2 antibody is un-conjugated
Application:	Western Blotting (WB)

## Product Details

Immunogen:	IMPG2 antibody was raised using the C terminal of IMPG2 corresponding to a region with amino acids VVFFSLRVTNMMFSEDLFNKNSLEYKALEQRFLELLVPYLQSNLTGFQNL
Specificity:	IMPG2 antibody was raised against the C terminal of IMPG2
Purification:	Affinity purified

## Target Details

Target:	IMPG2
Alternative Name:	IMPG2 ( <a href="#">IMPG2 Products</a> )
Background:	Interphotoreceptor matrix proteoglycan-2 (IMPG2) is part of an extracellular complex occupying the interface between photoreceptors and the retinal pigment epithelium in the fundus of the eye.

## Target Details

---

Molecular Weight: 138 kDa (MW of target protein)

## Application Details

---

Application Notes: WB: 1 µg/mL  
Optimal conditions should be determined by the investigator.

Comment: IMPG2 Blocking Peptide, catalog no. 33R-9875, is also available for use as a blocking control in assays to test for specificity of this IMPG2 antibody

Restrictions: For Research Use only

## Handling

---

Format: Lyophilized

Reconstitution: Lyophilized powder. Add distilled water for a 1 mg/mL concentration of IMPG2 antibody in PBS

Concentration: Lot specific

Buffer: PBS

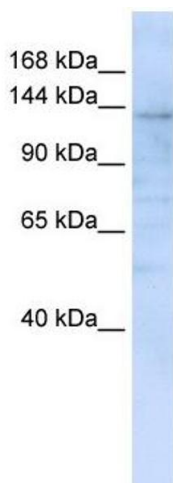
Handling Advice: Avoid repeated freeze/thaw cycles.  
Dilute only prior to immediate use.

Storage: 4 °C/-20 °C

Storage Comment: Store at 2-8 °C for short periods. For longer periods of storage, store at -20 °C.

## Images

---



### Western Blotting

**Image 1.** IMPG2 antibody used at 1 ug/ml to detect target protein.