

Datasheet for ABIN636066  
**anti-RHCE antibody (N-Term)**



[Go to Product page](#)

1 Image

## Overview

Quantity:	100 µL
Target:	RHCE
Binding Specificity:	N-Term
Reactivity:	Human
Host:	Rabbit
Clonality:	Polyclonal
Conjugate:	This RHCE antibody is un-conjugated
Application:	Western Blotting (WB)

## Product Details

Immunogen:	RHCE antibody was raised using the N terminal of RHCE corresponding to a region with amino acids SSKYPRSVRRCLPLCALTLAALILLFYFFTHYDASLEDQKGLVASYQVG
Specificity:	RHCE antibody was raised against the N terminal of RHCE
Purification:	Affinity purified

## Target Details

Target:	RHCE
Alternative Name:	RHCE ( <a href="#">RHCE Products</a> )
Background:	The Rh blood group system is the second most clinically significant of the blood groups, second only to ABO. It is also the most polymorphic of the blood groups, with variations due to deletions, gene conversions, and missense mutations. The Rh blood group includes this gene

## Target Details

---

which encodes both the RhC and RhE antigens on a single polypeptide and a second gene which encodes the RhD protein. The classification of Rh-positive and Rh-negative individuals is determined by the presence or absence of the highly immunogenic RhD protein on the surface of erythrocytes. A mutation in this gene results in amorph-type Rh-null disease.

Molecular Weight: 29 kDa (MW of target protein)

## Application Details

---

Application Notes: WB: 1 µg/mL  
Optimal conditions should be determined by the investigator.

Comment: RHCE Blocking Peptide, catalog no. 33R-8819, is also available for use as a blocking control in assays to test for specificity of this RHCE antibody

Restrictions: For Research Use only

## Handling

---

Format: Lyophilized

Reconstitution: Lyophilized powder. Add distilled water for a 1 mg/mL concentration of RHCE antibody in PBS

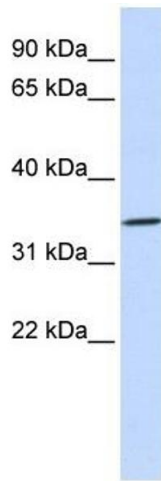
Concentration: Lot specific

Buffer: PBS

Handling Advice: Avoid repeated freeze/thaw cycles.  
Dilute only prior to immediate use.

Storage: 4 °C/-20 °C

Storage Comment: Store at 2-8 °C for short periods. For longer periods of storage, store at -20 °C.



### Western Blotting

**Image 1.** RHCE antibody used at 1 ug/ml to detect target protein.