

Datasheet for ABIN636080

**anti-Collagen, Type XXVI, alpha 1 (COL26A1) (C-Term)  
antibody**[Go to Product page](#)**1** Image

## Overview

Quantity:	100 µL
Target:	Collagen, Type XXVI, alpha 1 (COL26A1)
Binding Specificity:	C-Term
Reactivity:	Human, Mouse, Rat
Host:	Rabbit
Clonality:	Polyclonal
Conjugate:	Un-conjugated
Application:	Western Blotting (WB)

## Product Details

Immunogen:	EMID2 antibody was raised using the C terminal of EMID2 corresponding to a region with amino acids LAGERGTVGPSGEPGVKGEEGEKAATAEGEGVQQLREALKILAERVLILE
Specificity:	EMID2 antibody was raised against the C terminal of EMID2
Purification:	Affinity purified

## Target Details

Target:	Collagen, Type XXVI, alpha 1 (COL26A1)
Alternative Name:	EMID2 ( <a href="#">COL26A1 Products</a> )
Background:	EMID2 contains 1 EMI domain and 2 collagen-like domains. The exact function of ZCCHC3 remains unknown.

## Target Details

---

Molecular Weight: 45 kDa (MW of target protein)

## Application Details

---

Application Notes: WB: 1 µg/mL  
Optimal conditions should be determined by the investigator.

Comment: EMID2 Blocking Peptide, catalog no. 33R-4766, is also available for use as a blocking control in assays to test for specificity of this EMID2 antibody

Restrictions: For Research Use only

## Handling

---

Format: Lyophilized

Reconstitution: Lyophilized powder. Add distilled water for a 1 mg/mL concentration of EMID2 antibody in PBS

Concentration: Lot specific

Buffer: PBS

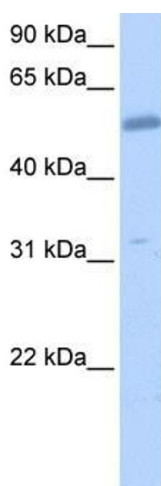
Handling Advice: Avoid repeated freeze/thaw cycles.  
Dilute only prior to immediate use.

Storage: 4 °C/-20 °C

Storage Comment: Store at 2-8 °C for short periods. For longer periods of storage, store at -20 °C.

## Images

---



### Western Blotting

**Image 1.** EMID2 antibody used at 1 ug/ml to detect target protein.