

Datasheet for ABIN636086
anti-CPD antibody (N-Term)



[Go to Product page](#)

1 Image

Overview

Quantity:	100 µL
Target:	CPD
Binding Specificity:	N-Term
Reactivity:	Human
Host:	Rabbit
Clonality:	Polyclonal
Conjugate:	This CPD antibody is un-conjugated
Application:	Western Blotting (WB)

Product Details

Immunogen:	Carboxypeptidase D antibody was raised using the N terminal of CPD corresponding to a region with amino acids SLNPDGFERAREGDCGFGDGGPSGASGRDNSRGRDLNRSFPDQFSTGEPP
Specificity:	Carboxypeptidase D antibody was raised against the N terminal of CPD
Purification:	Affinity purified

Target Details

Target:	CPD
Alternative Name:	Carboxypeptidase D (CPD Products)
Background:	The metallo-carboxypeptidase family of enzymes is divided into 2 subfamilies based on sequence similarities. The pancreatic carboxypeptidase-like and the regulatory B-type carboxypeptidase subfamilies. Carboxypeptidase D (CPD) has been identified as a regulatory B-

Target Details

type carboxypeptidase. CPD is a homolog of duck gp180, a hepatitis B virus-binding protein.

Molecular Weight: 152 kDa (MW of target protein)

Pathways: [Synaptic Membrane](#), [Regulation of G-Protein Coupled Receptor Protein Signaling](#)

Application Details

Application Notes: WB: 1 µg/mL

Optimal conditions should be determined by the investigator.

Comment: Carboxypeptidase D Blocking Peptide, catalog no. 33R-8613, is also available for use as a blocking control in assays to test for specificity of this Carboxypeptidase D antibody

Restrictions: For Research Use only

Handling

Format: Lyophilized

Reconstitution: Lyophilized powder. Add distilled water for a 1 mg/mL concentration of CPD antibody in PBS

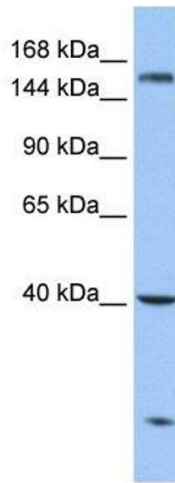
Concentration: Lot specific

Buffer: PBS

Handling Advice: Avoid repeated freeze/thaw cycles.
Dilute only prior to immediate use.

Storage: 4 °C/-20 °C

Storage Comment: Store at 2-8 °C for short periods. For longer periods of storage, store at -20 °C.



Western Blotting

Image 1. Carboxypeptidase D antibody used at 1 ug/ml to detect target protein.