

Datasheet for ABIN636104  
**anti-CTRB1 antibody (N-Term)**



[Go to Product page](#)

1 Image

## Overview

Quantity:	100 µL
Target:	CTRB1
Binding Specificity:	N-Term
Reactivity:	Human
Host:	Rabbit
Clonality:	Polyclonal
Conjugate:	This CTRB1 antibody is un-conjugated
Application:	Western Blotting (WB)

## Product Details

Immunogen:	Chymotrypsinogen B1 antibody was raised using the N terminal of CTRB1 corresponding to a region with amino acids MASLWLLSCFSLVGAAFGCGVPAIHPVLSGLSRIVNGEDAVPGSWPWQVS
Specificity:	Chymotrypsinogen B1 antibody was raised against the N terminal of CTRB1
Purification:	Affinity purified

## Target Details

Target:	CTRB1
Alternative Name:	Chymotrypsinogen B1 ( <a href="#">CTRB1 Products</a> )
Background:	Alpha-chymotrypsin is one of a family of serine proteases secreted into the gastrointestinal tract as the inactive precursor chymotrypsinogen. The zymogen is activated by proteolytic

## Target Details

cleavage by trypsin.

Molecular Weight: 28 kDa (MW of target protein)

## Application Details

Application Notes: WB: 1 µg/mL

Optimal conditions should be determined by the investigator.

Comment: Chymotrypsinogen B1 Blocking Peptide, catalog no. 33R-5752, is also available for use as a blocking control in assays to test for specificity of this Chymotrypsinogen B1 antibody

Restrictions: For Research Use only

## Handling

Format: Lyophilized

Reconstitution: Lyophilized powder. Add distilled water for a 1 mg/mL concentration of CTRB1 antibody in PBS

Concentration: Lot specific

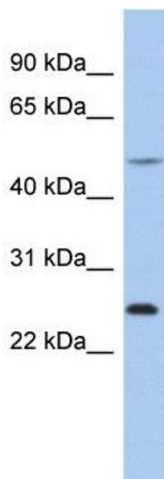
Buffer: PBS

Handling Advice: Avoid repeated freeze/thaw cycles.  
Dilute only prior to immediate use.

Storage: 4 °C/-20 °C

Storage Comment: Store at 2-8 °C for short periods. For longer periods of storage, store at -20 °C.

## Images



### Western Blotting

**Image 1.** Chymotrypsinogen B1 antibody used at 1 ug/ml to detect target protein.