

Datasheet for ABIN636115
anti-ZPLD1 antibody (C-Term)



[Go to Product page](#)

1 Image

Overview

Quantity:	100 µL
Target:	ZPLD1
Binding Specificity:	C-Term
Reactivity:	Human, Mouse
Host:	Rabbit
Clonality:	Polyclonal
Conjugate:	This ZPLD1 antibody is un-conjugated
Application:	Western Blotting (WB)

Product Details

Immunogen:	ZPLD1 antibody was raised using the C terminal of ZPLD1 corresponding to a region with amino acids DAGRRTTWSPQSSSGSAVLSAGPIITRSDPTNNSQLGSPSMPPFQLNA
Specificity:	ZPLD1 antibody was raised against the C terminal of ZPLD1
Purification:	Affinity purified

Target Details

Target:	ZPLD1
Alternative Name:	ZPLD1 (ZPLD1 Products)
Background:	The function of ZPLD1 has not been widely studied, and is yet to be fully elucidated.
Molecular Weight:	47 kDa (MW of target protein)

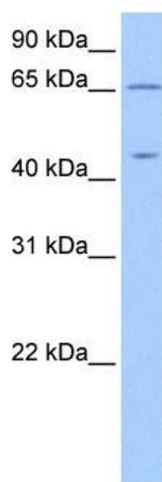
Application Details

Application Notes:	WB: 1 µg/mL Optimal conditions should be determined by the investigator.
Comment:	ZPLD1 Blocking Peptide, catalog no. 33R-1851, is also available for use as a blocking control in assays to test for specificity of this ZPLD1 antibody
Restrictions:	For Research Use only

Handling

Format:	Lyophilized
Reconstitution:	Lyophilized powder. Add distilled water for a 1 mg/mL concentration of ZPLD1 antibody in PBS
Concentration:	Lot specific
Buffer:	PBS
Handling Advice:	Avoid repeated freeze/thaw cycles. Dilute only prior to immediate use.
Storage:	4 °C/-20 °C
Storage Comment:	Store at 2-8 °C for short periods. For longer periods of storage, store at -20 °C.

Images



Western Blotting

Image 1. ZPLD1 antibody used at 1 ug/ml to detect target protein.