

Datasheet for ABIN6383847

anti-PD-L1 antibody (Extracellular Domain)[Go to Product page](#)**4** Images

Overview

Quantity:	100 µg
Target:	PD-L1
Binding Specificity:	AA 39-191, Extracellular Domain
Reactivity:	Human
Host:	Mouse
Clonality:	Monoclonal
Conjugate:	This PD-L1 antibody is un-conjugated
Application:	Western Blotting (WB), Immunohistochemistry (IHC)

Product Details

Purpose:	PD-L1
Immunogen:	Recombinant fragment around aa 39-191 of human CD274 protein (exact sequence is proprietary)
Clone:	PDL1-2746
Isotype:	IgG2b kappa
Purification:	By Protein A from bioreactor concentrate

Target Details

Target:	PD-L1
Alternative Name:	CD274 (PD-L1 Products)

Target Details

Background:	CD274 Molecule, B7-H, B7H1, B7-H1, PD-L1, PDCD1L1, PDCD1LG1, PDL1, Programmed cell death 1 ligand 1, PDCD1 ligand 1, Programmed death ligand 1, B7 homolog 1, CD_antigen: CD274
Gene ID:	29126
UniProt:	Q9NZQ7
Pathways:	Cancer Immune Checkpoints

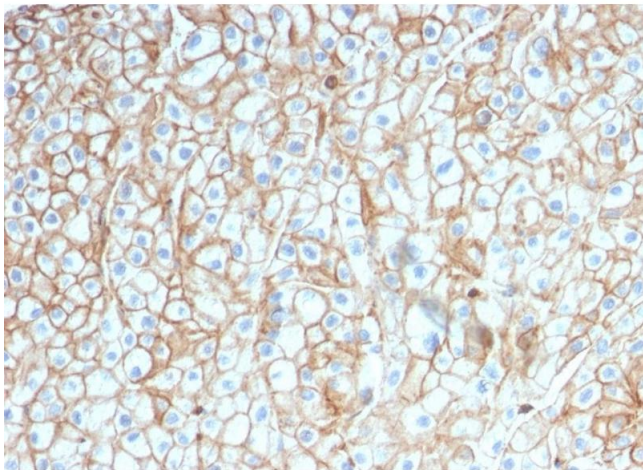
Application Details

Application Notes:	Optimal working dilution should be determined by the investigator.
Comment:	HEK293, HepG2, heart, placenta, spleen, tonsil, carcinomas.
Restrictions:	For Research Use only

Handling

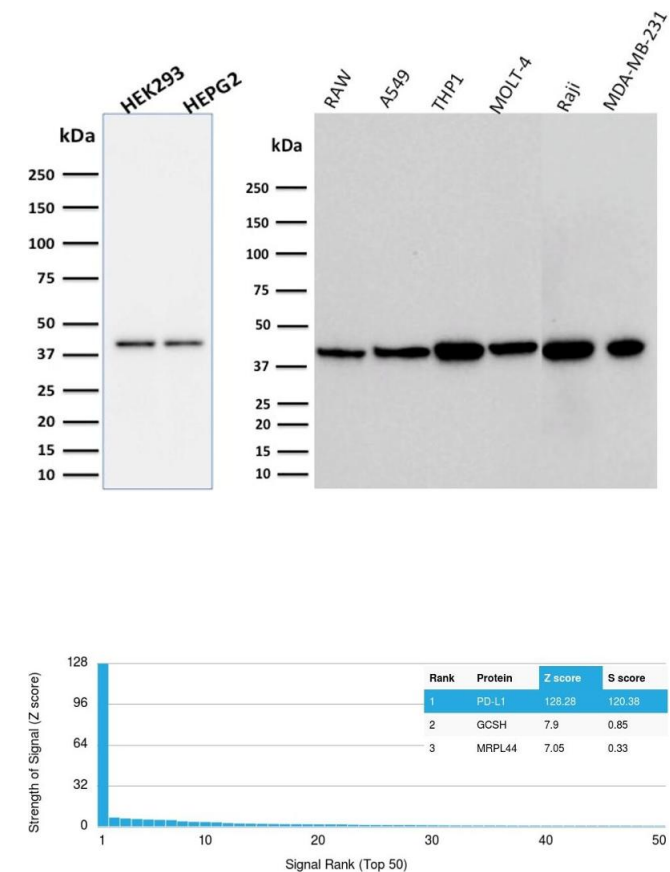
Concentration:	1 mg/mL
Buffer:	1 mg IgG/mL in PBS, 0.05 % azide
Handling Advice:	Avoid repeated freeze/thaw cycles.
Storage Comment:	For long term storage, keep small aliquots at -20°C or -80°C and keep one aliquot at 4°C for daily experimentations. Azide will preserve antibody at 4°C for 6-12 months, when kept away from direct sun light.

Images



Immunohistochemistry

Image 1. ABIN6383847 to PD-L1 was successfully used to stain membranes of carcinomas in human lung, cervix and breast sections. Recommended concentration: 1-3ug/ml; Formaldehyde-fixed, paraffin-embedded human cervical carcinoma stained with PD-L1 Mouse Monoclonal Antibody ABIN6383847 at 1-2ug/ml for 30 minutes at RT. Epitope retrieval: Boiling at pH6 for 10-20 min followed by 20 min cooling. DAB staining by HRP polymer.



Western Blotting

Image 2. ABIN6383847 to PD-L1 was successfully used to stain an approx. 45kDa band in lysates of multiple cell lines. Recommended concentration: 1-3ug/ml; Western Blot of multiple cell line lysates (30ug) stained with PD-L1 Mouse Monoclonal Antibody ABIN6383847 at 1-2ug/ml (1h at ambient temp). ECL staining by HRP.

Protein Array

Image 3. Specificity of ABIN6383847 to PD-L1 was tested on a human protein array, showing monospecificity against >19,000 full-length human proteins. A protein BLAST search against H. sapiens reveal no closely related other proteins.; Cross-reactivity assessment of PD-L1 Mouse Monoclonal Antibody ABIN6383847 (1ug/ml) on CDI's Protein Array containing more than 19,000 full-length human proteins.

Please check the [product details page](#) for more images. Overall 4 images are available for ABIN6383847.