



Datasheet for ABIN638438  
**anti-CD180 antibody (PE)**



[Go to Product page](#)

1 Image

3 Publications

### Overview

Quantity:	100 tests
Target:	CD180
Reactivity:	Human
Host:	Mouse
Clonality:	Monoclonal
Conjugate:	This CD180 antibody is conjugated to PE
Application:	Flow Cytometry (FACS)

### Product Details

Immunogen:	Human tonsillar B cells
Clone:	G28-8
Isotype:	IgG1 kappa
Specificity:	The mouse monoclonal antibody G28-8 recognizes an extracellular epitope of CD180, a 95-105 kDa TLR-like glycoprotein expressed on peripheral blood monocytes and dendritic cells, mantle zone B cells and marginal zone B cells, but very weakly on germinal center B cells.
Cross-Reactivity (Details):	Human
Purification:	Purified antibody is conjugated with R-phycoerythrin (PE) under optimum conditions. Unconjugated antibody and free fluorochrome are removed by size-exclusion chromatography.

### Target Details

Target:	CD180
---------	-------

## Target Details

---

Alternative Name:	CD180 ( <a href="#">CD180 Products</a> )
Background:	CD180 Molecule,CD180, also known as RP105 (or Bgp95, LY64) is a type I membrane glycoprotein of Toll-like receptor (TLR) family. Its cytoplasmic tail is short and unlike the TLRs, it lacks the TIR domain. CD180 expression is dependent on the coexpression of its helper molecule, MD-1, and mirrors that of TLR4 on antigen-presenting cells. CD180 regulates recognition of LPS and signaling in B cells, via interacting directly with the TLR4 signaling complex, inhibiting its ability to bind microbial ligands. Ligation of CD180 by monoclonal antibodies leads to B cell activation, upregulation of CD80/CD86, and increase in cell size.,LY64, Ly78, RP105, Bgp95
Gene ID:	4064
UniProt:	<a href="#">Q99467</a>
Pathways:	<a href="#">Cellular Response to Molecule of Bacterial Origin</a> , <a href="#">Toll-Like Receptors Cascades</a>

## Application Details

---

Application Notes:	Flow cytometry: The reagent is designed for analysis of human blood cells using 20 µL reagent / 100 µL of whole blood or 10 <sup>6</sup> cells in a suspension. The content of a vial (2 ml) is sufficient for 100 tests.
Comment:	The purified antibody is conjugated with R-Phycoerythrin (PE) under optimum conditions. The conjugate is purified by size-exclusion chromatography and adjusted for direct use. No reconstitution is necessary.
Restrictions:	For Research Use only

## Handling

---

Reconstitution:	No reconstitution is necessary.
Buffer:	Stabilizing phosphate buffered saline (PBS), pH 7.4, 15 mM sodium azide
Preservative:	Sodium azide
Precaution of Use:	This product contains Sodium azide: a POISONOUS AND HAZARDOUS SUBSTANCE which should be handled by trained staff only.
Handling Advice:	<b>Do not freeze.</b> Avoid prolonged exposure to light.
Storage:	4 °C

## Handling

Storage Comment: Store at 2-8°C. Protect from prolonged exposure to light. Do not freeze.

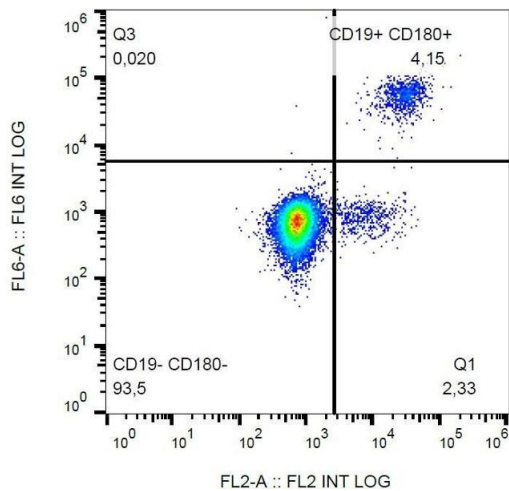
## Publications

Product cited in: Olson, Graves, Shu, Ryan, Clark: "Caspase activity is required for stimulated B lymphocytes to enter the cell cycle." in: **Journal of immunology (Baltimore, Md. : 1950)**, Vol. 170, Issue 12, pp. 6065-72, (2003) ([PubMed](#)).

Clark, Shu, Lüscher, Draves, Banchereau, Ledbetter, Valentine: "Activation of human B cells. Comparison of the signal transduced by IL-4 to four different competence signals." in: **Journal of immunology (Baltimore, Md. : 1950)**, Vol. 143, Issue 12, pp. 3873-80, (1990) ([PubMed](#)).

Valentine, Clark, Shu, Norris, Ledbetter: "Antibody to a novel 95-kDa surface glycoprotein on human B cells induces calcium mobilization and B cell activation." in: **Journal of immunology (Baltimore, Md. : 1950)**, Vol. 140, Issue 12, pp. 4071-8, (1988) ([PubMed](#)).

## Images



### Flow Cytometry

**Image 1.** Surface staining of human peripheral blood cells with anti-CD180 (G28-8) PE.