

Datasheet for ABIN6386427
IL-15 Protein (AA 49-162)[Go to Product page](#)

2 Images

Overview

Quantity:	50 µg
Target:	IL-15 (IL15)
Protein Characteristics:	AA 49-162
Origin:	Human
Source:	Escherichia coli (E. coli)
Protein Type:	Recombinant
Biological Activity:	Active

Product Details

Sequence:	AA 49-162
Purity:	>95 % as determined by SDS-PAGE.
Endotoxin Level:	Less than 0.1 EU per µg by the LAL method.

Target Details

Target:	IL-15 (IL15)
Alternative Name:	IL-15 (IL15 Products)
Background:	<p>Interleukin 15 is also known as IL15, IL-15, and is a cytokine with structural similarity to IL-2. Like IL-2, IL-15 binds to and signals through the IL-2/IL-15 beta chain (CD122) and the common gamma chain (gamma-C, CD132). IL-15 is secreted by mononuclear phagocytes (and some other cells) following infection by virus(es). This cytokine induces cell proliferation of natural killer cells, cells of the innate immune system whose principal role is to kill virally infected cells.</p>

Target Details

Interleukin 15 (IL-15) regulates T and natural killer (NK) cell activation and proliferation. Survival signals that maintain memory T cells in the absence of antigen are provided by IL-15. This cytokine is also implicated in NK cell development. In rodent lymphocytes, IL-15 prevents apoptosis by inducing an apoptosis inhibitor, BCL2L1/BCL-x(L). IL-15 has been shown to enhance the anti-tumor immunity of CD8+ T cells in pre-clinical models. A phase I clinical trial to evaluate the safety, dosing, and anti-tumor efficacy of IL-15 in patients with metastatic melanoma and renal cell carcinoma (kidney cancer) has begun to enroll patients at the National Institutes of Health.

Molecular Weight: 12.8 kDa

Pathways: [JAK-STAT Signaling](#), [Glycosaminoglycan Metabolic Process](#)

Application Details

Restrictions: For Research Use only

Handling

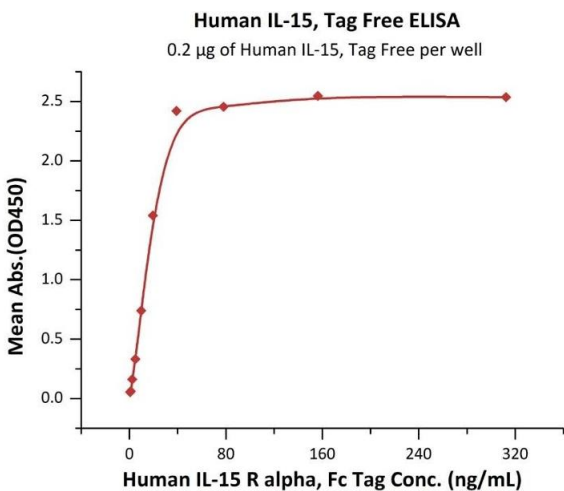
Format: Lyophilized

Buffer: PBS, pH 7.4

Handling Advice: Please avoid repeated freeze-thaw cycles.

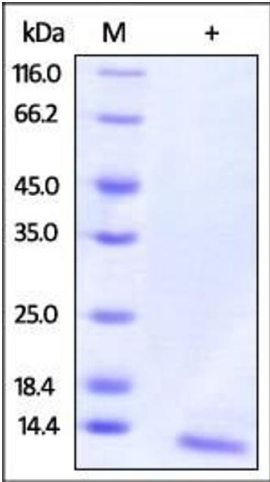
Storage: -20 °C

Images



ELISA

Image 1. Immobilized Human IL-15, Tag Free (ABIN6386427, ABIN6388244) at 2 µg/mL (100 µL/well) can bind Human IL-15 R alpha, Fc Tag (ABIN6731259, ABIN6809889) with a linear range of 0.6-39 ng/mL (QC tested).



SDS-PAGE

Image 2. Human IL-15, Tag Free on under reducing (R) condition. The gel was stained overnight with Coomassie Blue. The purity of the protein is greater than 95 % .