

Datasheet for ABIN6386651
HUS1 Protein (AA 1-280) (His tag)



[Go to Product page](#)

1 Image

Overview

| | |
|-------------------------------|---|
| Quantity: | 50 µg |
| Target: | HUS1 |
| Protein Characteristics: | AA 1-280 |
| Origin: | Human |
| Source: | Escherichia coli (E. coli) |
| Protein Type: | Recombinant |
| Purification tag / Conjugate: | This HUS1 protein is labelled with His tag. |
| Application: | SDS-PAGE (SDS) |

Product Details

| | |
|------------------|---------------------------------------|
| Characteristics: | HUS1, 1-280aa, Human, His tag, E.coli |
| Purity: | > 95 % by SDS - PAGE |

Target Details

| | |
|-------------------|---|
| Target: | HUS1 |
| Alternative Name: | HUS1 (HUS1 Products) |
| Background: | HUS1 is a component of an evolutionarily conserved, genotoxin-activated checkpoint complex. This protein associates with Rad9 and Rad1 to form the 9-1-1(RAD9-RAD1-HUS1) complex, which localizes to DNA lesions and promotes DNA damage signaling and repair or apoptosis, cell cycle arrest. The trimeric complex is structurally similar to the proliferating cell nuclear antigen (PCNA) sliding clamp and interacts with Rad17 as a clamp-clamp loader pair during the |

Target Details

DNA damage response. Recombinant human HUS1 protein, fused to His-tag at N-terminus, was expressed in E.coli and purified by using conventional chromatography. Synonyms: checkpoint protein HUS1,. NCBI no.: NP_004498

Molecular Weight: 33.8 kDa (300aa), confirmed by MALDI-TOF

Application Details

Restrictions: For Research Use only

Handling

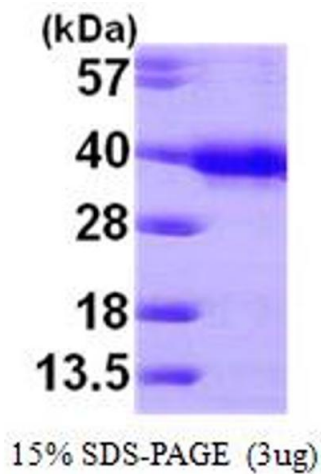
Format: Liquid

Concentration: 0.25mg/ml (determined by Bradford assay)

Buffer: Liquid. In 20 mM Tris-HCl Buffer (pH 8.0) containing 100 mM NaCl, 40% Glycerol

Storage: 4 °C

Images



SDS-PAGE

Image 1.