

Datasheet for ABIN6386664  
**ISCU Protein (AA 35-167) (His tag)**



[Go to Product page](#)

1 Image

## Overview

Quantity:	50 µg
Target:	ISCU
Protein Characteristics:	AA 35-167
Origin:	Human
Source:	Escherichia coli (E. coli)
Protein Type:	Recombinant
Purification tag / Conjugate:	This ISCU protein is labelled with His tag.
Application:	SDS-PAGE (SDS)

## Product Details

Characteristics:	ISCU, 35-167aa, Human, His tag, E.coli
Purity:	> 90 % by SDS - PAGE

## Target Details

Target:	ISCU
Alternative Name:	ISCU ( <a href="#">ISCU Products</a> )
Background:	Iron-sulfur cluster assembly enzyme, also known as ISCU, is a member of the nifU family. Iron-sulfur (Fe-S) clusters are necessary for several mitochondrial enzymes and other subcellular compartment proteins. It is interact with ISCS, a cysteine desulfurase, to sequester inorganic sulfur for Fe-S cluster assembly. ISCU-ISCS protein complex localizes in both mitochondria and cytosol, implying that Fe-S cluster assembly takes place in multiple subcellular compartments

## Target Details

in mammalian cells. Recombinant human ISCU protein, fused to His-tag at N-terminus, was expressed in E.coli and purified by using conventional chromatography techniques. Synonyms: Iron-sulfur cluster assembly enzyme ISCU, HML, hnifU, ISU2, NIFU, NIFUN. NCBI no.: NP\_998760

Molecular Weight: 16.7kDa (154aa), confirmed by MALDI-TOF

## Application Details

Restrictions: For Research Use only

## Handling

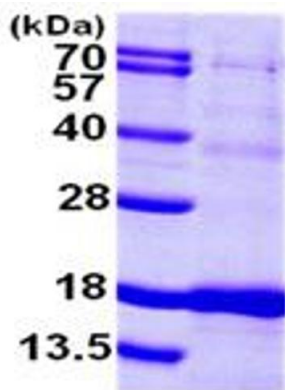
Format: Liquid

Concentration: 0.5mg/ml (determined by Bradford assay)

Buffer: Liquid. 20mM Tris-HCl buffer (pH8.0) containing 10% glycerol, 2mM DTT, 100mM NaCl

Storage: 4 °C

## Images



15% SDS-PAGE (3ug)

### SDS-PAGE

Image 1.