

Datasheet for ABIN6386673
PPP3CA Protein (AA 1-511) (His tag)



[Go to Product page](#)

1 Image

Overview

Quantity:	50 µg
Target:	PPP3CA
Protein Characteristics:	AA 1-511
Origin:	Human
Source:	Escherichia coli (E. coli)
Protein Type:	Recombinant
Purification tag / Conjugate:	This PPP3CA protein is labelled with His tag.
Application:	SDS-PAGE (SDS)

Product Details

Characteristics:	PPP3CA, 1-511aa, Human, His tag, E.coli
Purity:	> 85 % by SDS - PAGE

Target Details

Target:	PPP3CA
Alternative Name:	PPP3CA (PPP3CA Products)
Background:	PPP3CA, also known as Calcineurin A, is a major soluble calmodulin binding protein in the brain, a Ca ²⁺ /calmodulin dependent serine/threonine protein phosphatase, with a relatively narrow substrate specificity. It activates the T cells of the immune system and can be blocked by drugs. PPP3CA activates NFATc, a transcription factor by dephosphorylating it. The activated NFATc is then translocated into the nucleus, where it upregulates the expression of interleukin

Target Details

2. Recombinant human PPP3CA protein, fused to His-tag at N-terminus, was expressed in E.coli and purified by using conventional chromatography techniques. Synonyms: Serine/threonine-protein phosphatase 2B catalytic subunit alpha, CALN, CALNA, CALNA1, CCN1, CNA1, PPP2B. NCBI no.: NP_001124163

Molecular Weight: 60.0 kDa (534aa)

Pathways: [RTK Signaling](#), [WNT Signaling](#), [Fc-epsilon Receptor Signaling Pathway](#), [Negative Regulation of Hormone Secretion](#), [Carbohydrate Homeostasis](#), [Synaptic Membrane](#), [Skeletal Muscle Fiber Development](#), [Protein targeting to Nucleus](#), [VEGF Signaling](#), [BCR Signaling](#)

Application Details

Restrictions: For Research Use only

Handling

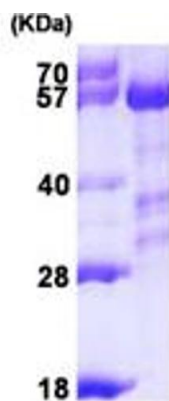
Format: Liquid

Concentration: 0.25 mg/ml (determined by Bradford assay)

Buffer: Liquid. In 20 mM Tris-HCl buffer (pH8.0) containing 0.2M NaCl, 5mM DTT, 1mM EDTA, 20% glycerol

Storage: 4 °C

Images



15% SDS-PAGE (3ug)

SDS-PAGE

Image 1.