

Datasheet for ABIN6386706

CDC25A Protein (AA 1-524) (His tag)[Go to Product page](#)**1** Image

Overview

Quantity:	50 µg
Target:	CDC25A
Protein Characteristics:	AA 1-524
Origin:	Human
Source:	Escherichia coli (E. coli)
Protein Type:	Recombinant
Purification tag / Conjugate:	This CDC25A protein is labelled with His tag.
Application:	SDS-PAGE (SDS)

Product Details

Characteristics:	CDC25A, 1-524aa, Human, His tag, E.coli
Purity:	> 80 % by SDS - PAGE

Target Details

Target:	CDC25A
Alternative Name:	CDC25A (CDC25A Products)
Background:	M-phase inducer phosphatase 1, also known as CDC25A, is a member of the CDC25 family of phosphatases. CDC25A is required for progression from G1 to the S phase of the cell cycle. It activates the cyclin-dependent kinase CDC2 by removing two phosphate groups. CDC25A is specifically degraded in response to DNA damage, which prevents cells with chromosomal abnormalities from progressing through cell division. CDC25A is an oncogene, although its

Target Details

exact role in oncogenesis has not been demonstrated. Recombinant human CDC25A protein, fused to His-tag at N-terminus, was expressed in E.coli and purified by using conventional chromatography techniques. Synonyms: M-phase inducer phosphatase 1, Dual specificity phosphatase Cdc25A, Cdc 25a, Cell division cycle 25 homolog A (S. pombe), Cell division cycle 25A, Cell division cycle 25A isoform a, Cell division cycle 25A isoform b, D9Ert393e, EC 3.1.3.48, M phase inducer phosphatase 1, MGC115549. NCBI no.: NP_001780

Molecular Weight: 63.2 kDa (560aa)

Pathways: [Cell Division Cycle](#), [Mitotic G1-G1/S Phases](#), [M Phase](#)

Application Details

Restrictions: For Research Use only

Handling

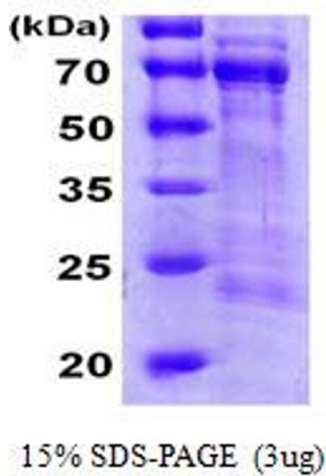
Format: Liquid

Concentration: 0.25 mg/ml (determined by Bradford assay)

Buffer: Liquid. In 20mM Tris-HCl buffer (pH 8.0) containing 5mM DTT, 20% glycerol, 0.2M NaCl, 1mM EDTA

Storage: 4 °C

Images



SDS-PAGE

Image 1.