

Datasheet for ABIN6386733

KAAG1 Protein (AA 1-84) (His tag)[Go to Product page](#)**1** Image

Overview

Quantity:	50 µg
Target:	KAAG1
Protein Characteristics:	AA 1-84
Origin:	Human
Source:	Escherichia coli (E. coli)
Protein Type:	Recombinant
Purification tag / Conjugate:	This KAAG1 protein is labelled with His tag.
Application:	SDS-PAGE (SDS)

Product Details

Characteristics:	KAAG1, 1-84aa, Human, His tag, E.coli
Purity:	> 90 % by SDS - PAGE

Target Details

Target:	KAAG1
Alternative Name:	KAAG1 (KAAG1 Products)
Background:	<p>Kidney associated antigen 1, also known as KAAG1, is expressed in testis and kidney, and, at lower levels, in urinary bladder and liver. And it is expressed by a high proportion of tumors of various histologic origin, including melanomas, sarcomas and colorectal carcinomas.</p> <p>Recombinant human KAAG1 protein, fused to His-tag at N-terminus, was expressed in E.coli and purified by using conventional chromatography techniques. Synonyms: Kidney associated</p>

Target Details

antigen 1, RU2AS. NCBI no.: NP_851854

Molecular Weight: 11.1kDa (104aa), confirmed by MALDI-TOF

Application Details

Restrictions: For Research Use only

Handling

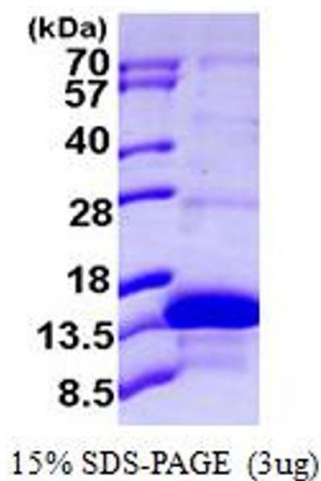
Format: Liquid

Concentration: 0.5mg/ml (determined by BCA)

Buffer: Liquid. In 20mM Tris-HCl buffer (pH 8.0) containing 1mM DTT, 10% glycerol, 100mM NaCl

Storage: 4 °C

Images



SDS-PAGE

Image 1.