

Datasheet for ABIN6386765
SYT1 Protein (AA 136-382) (His tag)



[Go to Product page](#)

1 Image

Overview

Quantity:	50 µg
Target:	SYT1
Protein Characteristics:	AA 136-382
Origin:	Human
Source:	Escherichia coli (E. coli)
Protein Type:	Recombinant
Purification tag / Conjugate:	This SYT1 protein is labelled with His tag.
Application:	SDS-PAGE (SDS)

Product Details

Characteristics:	SYT1, 136-382aa, Human, His tag, E.coli
Purity:	> 85 % by SDS - PAGE

Target Details

Target:	SYT1
Alternative Name:	SYT1 (SYT1 Products)
Background:	Synaptotagmin-1(SYT1) belongs to the synaptotagmin family contains 2 C2 domains. The synaptotagmins are integral membrane proteins of synaptic vesicles thought to serve as Ca(2+) sensors in the process of vesicular trafficking and exocytosis. SYT1 is the master switch responsible for allowing the human brain to release neurotransmitters. Recombinant human SYT1 protein, fused to His-tag at C-terminus, was expressed in E.coli and purified by

Target Details

using conventional chromatography techniques. Synonyms: synaptotagmin 1, P65, SVP65, SYT. NCBI no.: NP_005630

Molecular Weight: 29.5kDa (256aa), confirmed by MALDI-TOF

Pathways: [Synaptic Vesicle Exocytosis](#), [Dicarboxylic Acid Transport](#)

Application Details

Restrictions: For Research Use only

Handling

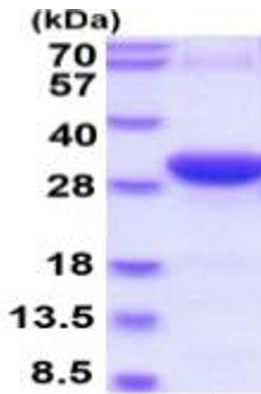
Format: Liquid

Concentration: 0.25mg/ml (determined by Bradford assay)

Buffer: Liquid. In 20mM Tris-HCl buffer (pH 8.0) containing 2mM DTT, 20% glycerol, 100mM NaCl

Storage: 4 °C

Images



15% SDS-PAGE (3ug)

SDS-PAGE

Image 1.