

Datasheet for ABIN6386801
SIT1 Protein (AA 1-196) (His tag)



[Go to Product page](#)

1 Image

Overview

Quantity:	50 µg
Target:	SIT1
Protein Characteristics:	AA 1-196
Origin:	Human
Source:	Escherichia coli (E. coli)
Protein Type:	Recombinant
Purification tag / Conjugate:	This SIT1 protein is labelled with His tag.
Application:	SDS-PAGE (SDS)

Product Details

Characteristics:	SIT1, 1-196aa, Human, His tag, E.coli
Purity:	> 90 % by SDS - PAGE

Target Details

Target:	SIT1
Alternative Name:	SIT1 (SIT1 Products)
Background:	SIT1, also known as signaling threshold-regulating transmembrane adapter 1, negatively regulates TCR (T-cell antigen receptor)-mediated signaling in T-cells. This protein involved in positive selection of T-cells. Recombinant human SIT1 protein, fused to His-tag at N-terminus, was expressed in E.coli and purified by using conventional chromatography. Synonyms: Signaling threshold-regulating transmembrane adapter 1, SIT. NCBI no.: NP_055265

Target Details

Molecular Weight: 16.9 kDa (156aa), confirmed by MALDI-TOF (Molecular weight on SDS-PAGE will appear higher)

Application Details

Restrictions: For Research Use only

Handling

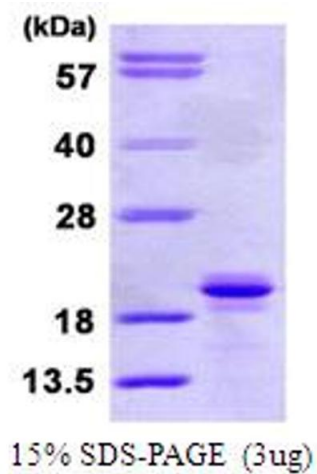
Format: Liquid

Concentration: 0.25 mg/ml (determined by Bradford assay)

Buffer: Liquid. 20mM Tris-HCl buffer (pH8.0) containing 20% glycerol

Storage: 4 °C

Images



SDS-PAGE

Image 1.