

Datasheet for ABIN6386967  
**MAGEA6 Protein (His tag)**



[Go to Product page](#)

1 Image

## Overview

Quantity:	100 µg
Target:	MAGEA6
Origin:	Human
Source:	Escherichia coli (E. coli)
Protein Type:	Recombinant
Purification tag / Conjugate:	This MAGEA6 protein is labelled with His tag.
Application:	SDS-PAGE (SDS)

## Product Details

Purification:	purified by chromatography
Purity:	> 90 % by SDS - PAGE

## Target Details

Target:	MAGEA6
Alternative Name:	MAGEA6 ( <a href="#">MAGEA6 Products</a> )
Background:	MAGEA6 is a member of the MAGEA family, which directs the expression of tumor antigens that are recognized on a human melanoma by autologous cytolytic T lymphocytes (CTL). The MAGE genes were initially isolated from different kinds of tumors, and based on their virtually exclusive tumor-specific expression in adult tissues, they have been used as targets for cancer immunotherapy. Recombinant human MAGEA6 protein, fused to His-tag at C-terminus, was expressed in E.coli and purified by using conventional chromatography techniques.

## Target Details

Molecular Weight: 35.9 kDa (322aa), confirmed by MALDI-TOF

NCBI Accession: [NP\\_005354](#)

## Application Details

Comment: Synonyms: Melanoma-associated antigen 6, CT1.6, MAGE-3b, MAGE3B, MAGE6

Restrictions: For Research Use only

## Handling

Format: Liquid

Concentration: 1 mg/ml (determined by Bradford assay)

Buffer: 20 mM Tris-HCl buffer (pH 8.0) containing 0.1 M NaCl, 10% glycerol, 1 MM DTT

Storage: 4 °C

Storage Comment: Avoid repeated freezing and thawing cycles.

## Images

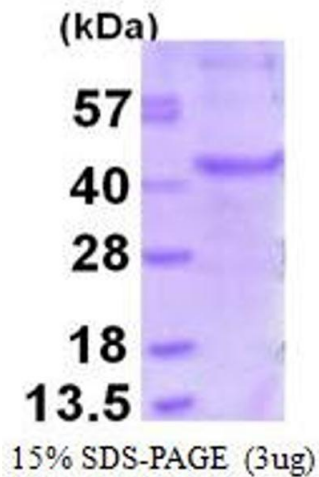


Image 1.