

Datasheet for ABIN6386971
CHMP1B Protein (His tag)



[Go to Product page](#)

1 Image

Overview

Quantity:	100 µg
Target:	CHMP1B
Origin:	Human
Source:	Escherichia coli (E. coli)
Protein Type:	Recombinant
Purification tag / Conjugate:	This CHMP1B protein is labelled with His tag.
Application:	SDS-PAGE (SDS)

Product Details

Purification:	purified by using conventional chromatography.
Purity:	> 85 % by SDS - PAGE

Target Details

Target:	CHMP1B
Alternative Name:	CHMP1B (CHMP1B Products)
Background:	CHMP1B, also known as charged multivesicular body protein 1b, is probable peripherally associated component of the endosomal sorting required for transport complex III (ESCRT-III) which is involved in multivesicular bodies (MVBs) formation and sorting of endosomal cargo proteins into MVBs. MVBs contain intraluminal vesicles (ILVs) that are generated by invagination and scission from the limiting membrane of the endosome and mostly are delivered to lysosomes enabling degradation of membrane proteins, such as stimulated growth

Target Details

factor receptors, lysosomal enzymes and lipids. Recombinant human CHMP1B protein, fused to His-tag at N-terminus, was expressed in E.coli and purified by using conventional chromatography.

Molecular Weight: 24.7 kDa (223aa), confirmed by MALDI-TOF (Molecular weight on SDS-PAGE will appear higher)

NCBI Accession: [NP_065145](#)

Application Details

Comment: Synonyms: Charged multivesicular body protein 1b, C10orf2, C18-ORF2, C18orf2, CHMP1.5, hVps46-2, Vps46-2, Vps46B

Restrictions: For Research Use only

Handling

Format: Liquid

Concentration: 0.25 mg/ml (determined by Bradford assay)

Buffer: 20 mM Tris-HCl buffer (pH 8.0) containing 20% glycerol, 0.1 M NaCl, 1 MM DTT

Storage: 4 °C

Storage Comment: Avoid repeated freezing and thawing cycles.

Images

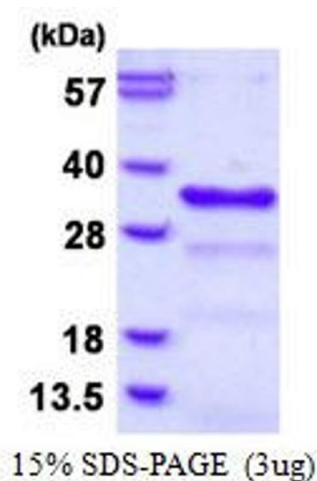


Image 1.