

Datasheet for ABIN6387011

**TBCC Protein (His tag)**[Go to Product page](#)**1** Image

## Overview

Quantity:	100 µg
Target:	TBCC
Origin:	Human
Source:	Escherichia coli (E. coli)
Protein Type:	Recombinant
Purification tag / Conjugate:	This TBCC protein is labelled with His tag.
Application:	SDS-PAGE (SDS)

## Product Details

Purification:	purified by chromatography
Purity:	> 85 % by SDS - PAGE

## Target Details

Target:	TBCC
Alternative Name:	TBCC ( <a href="#">TBCC Products</a> )
Background:	TBCC (tubulin folding cofactor C) belongs to the TBCC family. It plays a role in the regulation of centrosome and Golgi apparatus positioning, with consequences on cell shape and cell migration. Cofactor C is one of four proteins (cofactors A, D, E and C) involved in the pathway leading to correctly folded b-tubulin from folding intermediates. Cofactors A and D are believed to play a role in capturing and stabilizing b-tubulin intermediates in a quasi-native confirmation. Cofactor E binds to the cofactor D/b-tubulin complex, interaction with cofactor C then causes

## Target Details

the release of b-tubulin polypeptides. Recombinant human TBCC protein, fused to His-tag at N-terminus, was expressed in E.coli and purified by using conventional chromatography techniques.

Molecular Weight: 41.7 kDa (369aa), confirmed by MALDI-TOF

NCBI Accession: [NP\\_003183](#)

## Application Details

Comment: Synonyms: Tubulin-specific chaperone C, CFC, tubulin folding cofactor C

Restrictions: For Research Use only

## Handling

Format: Liquid

Concentration: 0.5 mg/ml (determined by Bradford assay)

Buffer: 20 mM Tris-HCl buffer (pH 8.0) containing 0.1 M NaCl, 10% glycerol, 1 MM DTT

Storage: 4 °C

Storage Comment: Avoid repeated freezing and thawing cycles.

## Images

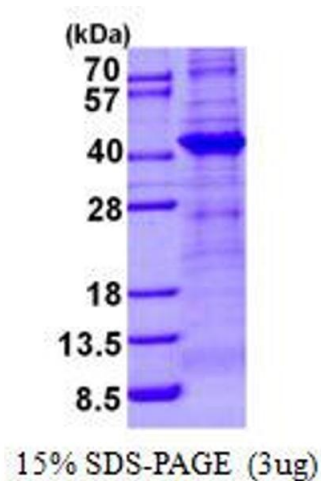


Image 1.