

Datasheet for ABIN6387086 **PARD6B Protein (His tag)**



[Go to Product page](#)

1 Image

Overview

Quantity:	100 µg
Target:	PARD6B
Origin:	Human
Source:	Escherichia coli (E. coli)
Protein Type:	Recombinant
Purification tag / Conjugate:	This PARD6B protein is labelled with His tag.
Application:	SDS-PAGE (SDS)

Product Details

Purity: > 85 % by SDS - PAGE

Target Details

Target:	PARD6B
Alternative Name:	PARD6B (PARD6B Products)
Background:	Partitioning defective 6 homolog beta, also known as PARD6B, is a member of the PAR6 family and encodes a protein with a PSD95/Discs-large/ZO1 (PDZ) domain, an OPR domain and a semi-Cdc42/Rac interactive binding (CRIB) domain. Cellular asymmetry is critical for the development of multicellular organisms. PARD (partitioning-defective) proteins play important roles in asymmetric cell division and polarized growth, whereas Cdc42 and Rac mediate establishment of cell growth and polarity and contribute to oncogenic transformation by Ras. It is expressed in pancreas and in both adult and fetal kidney, and is weakly expressed in placenta and lung. Recombinant human PARD6B protein, fused to His-tag at N-terminus, was expressed

Target Details

in E.coli.

Molecular Weight: 43.6 kDa (395aa)

NCBI Accession: [NP_115910](#)

Pathways: [Cell-Cell Junction Organization](#)

Application Details

Comment: Synonyms: Partitioning defective 6 homolog beta, PAR6B

Restrictions: For Research Use only

Handling

Format: Liquid

Concentration: 0.5 mg/ml (determined by Bradford assay)

Buffer: 20 mM Tris-HCl buffer (pH 8.0) containing 2 M Urea, 20% glycerol, 0.2 M NaCl

Storage: 4 °C

Storage Comment: Avoid repeated freezing and thawing cycles.

Images

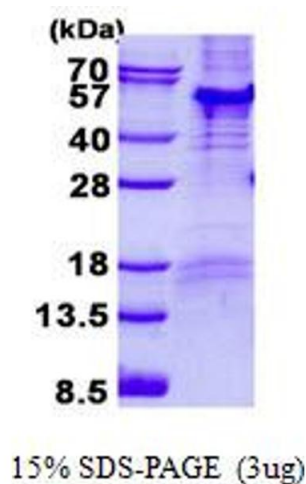


Image 1.