

Datasheet for ABIN6387147  
**GOSR2 Protein (His tag)**



[Go to Product page](#)

1 Image

## Overview

Quantity:	100 µg
Target:	GOSR2
Origin:	Human
Source:	Escherichia coli (E. coli)
Protein Type:	Recombinant
Purification tag / Conjugate:	This GOSR2 protein is labelled with His tag.
Application:	SDS-PAGE (SDS)

## Product Details

Purity: > 85 % by SDS - PAGE

## Target Details

Target:	GOSR2
Alternative Name:	GOSR2 ( <a href="#">GOSR2 Products</a> )
Background:	Golgi SNAP receptor complex member 2 isoform A, also known as GOSR2, belongs to the SNARE protein family and are important trafficking proteins between the endoplasmic reticulum and the Golgi and between Golgi subcompartments. This protein exists as cytoplasmically oriented integral membrane proteins. The human GOSR2 gene, which maps to chromosome 17q21, is located near a locus implicated in familial essential hypertension, indicating that it is a potential candidate gene for this disease. Recombinant human GOSR2 protein, fused to His-tag at N-terminus, was expressed in E.coli.

## Target Details

Molecular Weight: 24.6 kDa (213aa)

NCBI Accession: [NP\\_004278](#)

Pathways: [ER-Nucleus Signaling](#)

## Application Details

Comment: Synonyms: Golgi SNAP receptor complex member 2 isoform A, Bos1, EPM6, GS27, Membrin

Restrictions: For Research Use only

## Handling

Format: Liquid

Concentration: 0.25 mg/ml (determined by Bradford assay)

Buffer: 20 mM Tris-HCl buffer (pH 8.0) containing 1 M Urea, 10% glycerol

Storage: 4 °C

Storage Comment: Avoid repeated freezing and thawing cycles.

## Images

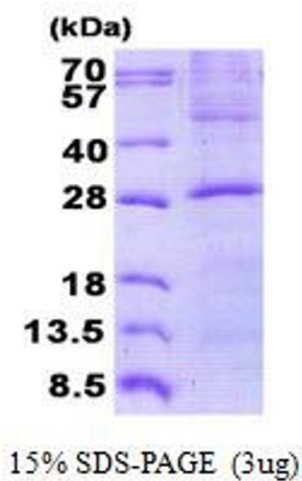


Image 1.