

Datasheet for ABIN6387148  
**LPCAT1 Protein (His tag)**[Go to Product page](#)

## 1 Image

## Overview

Quantity:	100 µg
Target:	LPCAT1
Origin:	Human
Source:	Escherichia coli (E. coli)
Protein Type:	Recombinant
Purification tag / Conjugate:	This LPCAT1 protein is labelled with His tag.
Application:	SDS-PAGE (SDS)

## Product Details

Purity:	> 90 % by SDS - PAGE
---------	----------------------

## Target Details

Target:	LPCAT1
Alternative Name:	LPCAT1 ( <a href="#">LPCAT1 Products</a> )
Background:	Lysophosphatidylcholine acyltransferase 1, also known as LPCAT1, belongs to the 1-acyl-sn-glycerol-3-phosphate acyltransferase family. It is a key enzyme for remodeling phospholipids, including phosphatidylcholine. LPCAT1 possesses both acyltransferase and acetyltransferase activities. It mediates the conversion of 1-acyl-sn-glycero-3-phosphocholine (LPC) into phosphatidylcholine (PC). Recombinant human LPCAT1 protein, fused to His-tag at N-terminus, was expressed in E.coli.
Molecular Weight:	53.4 kDa (479aa)

Target Details

NCBI Accession:

NP\_079106

Application Details

Comment:

Synonyms: Lysophosphatidylcholine acyltransferase 1, AYTL2, lpcat, PFAAP3

Restrictions:

For Research Use only

Handling

Format:

Liquid

Concentration:

0.25 mg/ml (determined by Bradford assay)

Buffer:

20 mM Tris-HCl buffer (pH 8.0) containing 1 M Urea, 10% glycerol

Storage:

4 °C

Storage Comment:

Avoid repeated freezing and thawing cycles.

Images

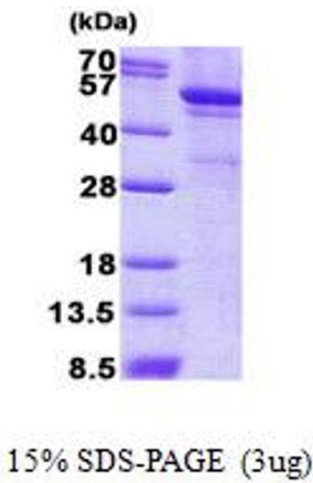


Image 1.