

Datasheet for ABIN6387236  
**NHLH1 Protein (AA 1-133) (His tag)**



[Go to Product page](#)

1 Image

## Overview

Quantity:	50 µg
Target:	NHLH1
Protein Characteristics:	AA 1-133
Origin:	Human
Source:	Escherichia coli (E. coli)
Protein Type:	Recombinant
Purification tag / Conjugate:	This NHLH1 protein is labelled with His tag.
Application:	SDS-PAGE (SDS)

## Product Details

Sequence: MGSSHHHHHH SSSLVPRGSH MGSMMLNSDT MELDLPPTHS ETESGFSDCG GGAGPDGAGP  
GGPGGGQARG PEPGEPGRKD LQHLSREERR RRRRATAKYR TAHATRERIR VEA FNLAFAE  
LRKLLPTLPP DKKLSKIEIL RLAICYISYL NHVLDV

Purity: > 85 % by SDS - PAGE

## Target Details

Target:	NHLH1
Alternative Name:	NHLH1 ( <a href="#">NHLH1 Products</a> )
Background:	The helix-loop-helix (HLH) proteins are a family of putative transcription factors, some of which have been shown to play an important role in growth and development of a wide variety of tissues and species. NHLH1 may serve as DNA-binding protein and may be involved in the

## Target Details

control of cell-type determination, possibly within the developing nervous system. Recombinant human NHLH1 protein, fused to His-tag at N-terminus, was expressed in E.coli and purified by using conventional chromatography techniques.

Molecular Weight: 17.0kDa (156aa) confirmed by MALDI-TOF (Molecular size on SDS-PAGE will appear higher)

NCBI Accession: [NP\\_005589](#)

UniProt: [Q02575](#)

## Application Details

Application Notes: Optimal working dilution should be determined by the investigator.

Restrictions: For Research Use only

## Handling

Format: Liquid

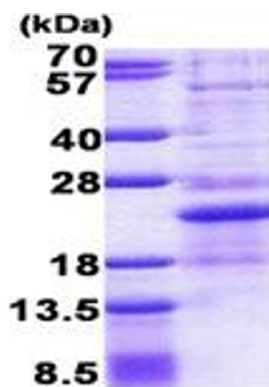
Concentration: 0.25 mg/mL

Buffer: Liquid. In 20 mM Tris-HCl buffer ( pH 8.0) containing 0.2M NaCl, 40 % glycerol, 2 mM DTT

Storage: 4 °C,-20 °C,-80 °C

Storage Comment: Can be stored at +4C short term (1-2 weeks). For long term storage, aliquot and store at -20C or -70C. Avoid repeated freezing and thawing cycles.

## Images



15% SDS-PAGE (3ug)

### SDS-PAGE

Image 1.