



[Go to Product page](#)

Datasheet for ABIN6387253

DESI1 Protein (AA 1-168) (His tag)

1 Image

Overview

| | |
|-------------------------------|--|
| Quantity: | 100 µg |
| Target: | DESI1 (PPPDE2) |
| Protein Characteristics: | AA 1-168 |
| Origin: | Human |
| Source: | Escherichia coli (E. coli) |
| Protein Type: | Recombinant |
| Purification tag / Conjugate: | This DESI1 protein is labelled with His tag. |
| Application: | SDS-PAGE (SDS) |

Product Details

| | |
|-----------|--|
| Sequence: | MGSSHHHHHH SSSLVPRGSH MGSMEPPNLY PVKLYVYDLS KGLARRLSPI MLGKQLEGIW HTSIVVHKDE FFFGSGGISS CPPGGTLLGP PDSVVDVGST EVTEEIFLEY LSSLGESLFR GEAYNLFEHN CNTFSNEVAQ FLTGRKIPSY ITDLPSEVLS TPFQALRPL LDSIQIQPPG GSSVGRPNGQ S |
| Purity: | > 85 % by SDS - PAGE |

Target Details

| | |
|-------------------|---|
| Target: | DESI1 (PPPDE2) |
| Alternative Name: | DESI1 (PPPDE2 Products) |
| Background: | DESI1 belongs to the DeSI family and contains 1 PPPDE peptidase domain. This protein is a protease which deconjugates SuM01, SuM02 and SuM03 from some substrate proteins and |

Target Details

has isopeptidase but not SuMO-processing activity. DESI1 desumoylates ZBTB46.

Recombinant human DESI1 protein, fused to His-tag at N-terminus, was expressed in E.coli and purified by using conventional chromatography techniques.

Molecular Weight: 20.7 kDa (191aa), confirmed by MALDI-TOF

NCBI Accession: [NP_056519](#)

UniProt: [Q6ICB0](#)

Application Details

Application Notes: Optimal working dilution should be determined by the investigator.

Restrictions: For Research Use only

Handling

Format: Liquid

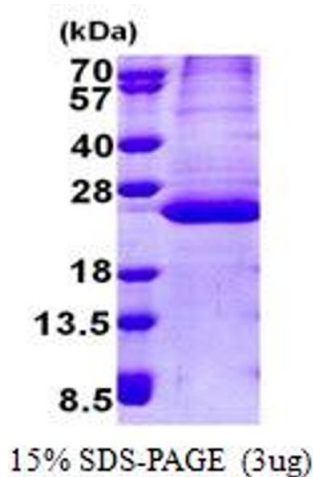
Concentration: 0.25 mg/mL

Buffer: Liquid. In 20 mM Tris-HCl buffer (pH 8.0) containing 0.1M NaCl, 10 % glycerol, 1 mM DTT

Storage: 4 °C,-20 °C,-80 °C

Storage Comment: Can be stored at +4C short term (1-2 weeks). For long term storage, aliquot and store at -20C or -70C. Avoid repeated freezing and thawing cycles.

Images



SDS-PAGE

Image 1.