

Datasheet for ABIN6387263
C19orf50 Protein (AA 1-176) (His tag)



[Go to Product page](#)

1 Image

Overview

| | |
|-------------------------------|---|
| Quantity: | 100 µg |
| Target: | C19orf50 |
| Protein Characteristics: | AA 1-176 |
| Origin: | Human |
| Source: | Escherichia coli (E. coli) |
| Protein Type: | Recombinant |
| Purification tag / Conjugate: | This C19orf50 protein is labelled with His tag. |
| Application: | SDS-PAGE (SDS) |

Product Details

| | |
|-----------|--|
| Sequence: | MGSSHHHHHH SSSLVPRGSH MGSM DLPDSA SRVFCGRILS MVNTDDVNAI ILAQKNMLDR FEKTNEMLLN FNNLSSARLQ QMSERFLHHT RTL VEMKRDL DSIFRRIRTL KGKLARQHPE AFSHIPEASF LEEEDPIIP PSTTTTIATS EQSTGSCDTS PDTVSPSLSP GFEDLSHVQP GSPAINGRSQ TDDEEMTGE |
| Purity: | > 85 % by SDS - PAGE |

Target Details

| | |
|-------------------|--|
| Target: | C19orf50 |
| Alternative Name: | KXD1 (C19orf50 Products) |
| Background: | KXD1 belongs to the KXD1 family and is involved in endosomal cargo sorting. This protein associates with the BLOC-1 complex and Interacts with BLOC1S1. It also Interacts with |

Target Details

DTNBP1/BLOC1S7(via coiled-coil domain). Recombinant human KXD1 protein, fused to His-tag at N-terminus, was expressed in E.coli and purified by using conventional chromatography techniques.

Molecular Weight: 22.1 kDa (199aa), confirmed by MALDI-TOF

NCBI Accession: [NP_076974](#)

UniProt: [Q9BQD3](#)

Application Details

Application Notes: Optimal working dilution should be determined by the investigator.

Restrictions: For Research Use only

Handling

Format: Liquid

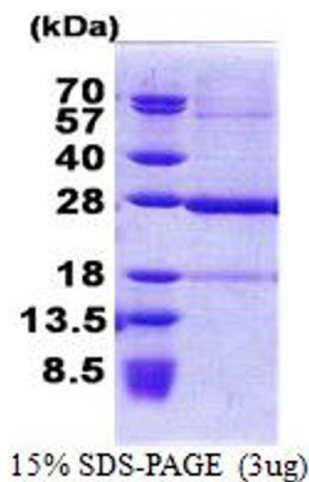
Concentration: 0.5 mg/mL

Buffer: Liquid. In 20 mM Tris-HCl buffer (pH 8.0) containing 0.15M NaCl, 10 % glycerol, 1 mM DTT

Storage: 4 °C,-20 °C,-80 °C

Storage Comment: Can be stored at +4C short term (1-2 weeks). For long term storage, aliquot and store at -20C or -70C. Avoid repeated freezing and thawing cycles.

Images



SDS-PAGE

Image 1.