



[Go to Product page](#)

Datasheet for ABIN6387322

SSSCA1 Protein (AA 1-199) (His tag)

1 Image

Overview

Quantity:	100 µg
Target:	SSSCA1
Protein Characteristics:	AA 1-199
Origin:	Human
Source:	Escherichia coli (E. coli)
Protein Type:	Recombinant
Purification tag / Conjugate:	This SSSCA1 protein is labelled with His tag.
Application:	SDS-PAGE (SDS)

Product Details

Sequence:	MGSSHHHHHH SSSLVPRGSH MGSMALNGAE VDDFSWEPPT EAETKVLQAR RERQDRISRL MGDYLLRGYR MLGETCADCG TILLQDKQRK IYCVACQELD SDVDKDNPAL NAQAALSQAR EHQLASASEL PLGSRPAPQP PVPRPEHCEG AAAGLAAQG PPAPAVPPNT DVMACTQTAL LQKLTWASAE LGSSTSLETS IQLCGLIRAC AEALRSLQQL QH
Purity:	> 90 % by SDS - PAGE

Target Details

Target:	SSSCA1
Alternative Name:	SSSCA1 (SSSCA1 Products)
Background:	SSSCA1 is recognized by a subset of anti-centromere antibodies from patients with scleroderma and/or Sjogren's syndrome. Subcellular localization has not yet been established.

Target Details

Recombinant human SSSCA1 protein, fused to His-tag at N-terminus, was expressed in E.coli.

Molecular Weight: 23.9kDa (222aa)

NCBI Accession: [NP_006387](#)

UniProt: [O60232](#)

Application Details

Application Notes: Optimal working dilution should be determined by the investigator.

Comment: Denatured

Restrictions: For Research Use only

Handling

Format: Liquid

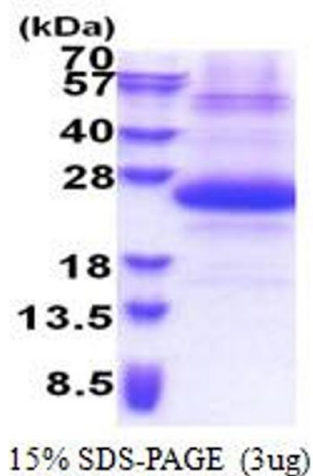
Concentration: 0.5 mg/mL

Buffer: Liquid. 20 mM Tris-HCl buffer (pH 8.0) containing 10 % glycerol 0.4M urea

Storage: 4 °C,-20 °C,-80 °C

Storage Comment: Can be stored at +4C short term (1-2 weeks). For long term storage, aliquot and store at -20C or -70C. Avoid repeated freezing and thawing cycles.

Images



SDS-PAGE

Image 1.