

Datasheet for ABIN6387332
SSR1 Protein (AA 22-207) (His tag)



[Go to Product page](#)

1 Image

Overview

Quantity:	100 µg
Target:	SSR1
Protein Characteristics:	AA 22-207
Origin:	Human
Source:	Escherichia coli (E. coli)
Protein Type:	Recombinant
Purification tag / Conjugate:	This SSR1 protein is labelled with His tag.
Application:	SDS-PAGE (SDS)

Product Details

Sequence: MGSSHHHHHH SSSLVPRGSH MGSRRGGPRGL LAVAQDLTED EETVEDSIIE DEDDEAEVEE
DEPTDLVEDK EEEDVSGEPE ASPSADTTIL FVKGEDFPAN NIVKFLVGFT NKGTEDFIVE
SLDASFRYPQ DYQFYIQNFT ALPLNTVPP QRQATFEYSF IPAEPMGGRP FGLVINLNYK
DLNGNVFQDA VFNQTVTVIE REDGLDGET

Purity: > 90 % by SDS - PAGE

Target Details

Target:	SSR1
Alternative Name:	SSR1 (SSR1 Products)
Background:	The signal sequence receptor (SSR) is a glycosylated endoplasmic reticulum (ER) membrane receptor associated with protein translocation across the ER membrane. The SSR consists of 2

Target Details

subunits, a 34-kD glycoprotein encoded by this gene and a 22-kD glycoprotein. This gene generates several mRNA species as a result of complex alternative polyadenylation. This gene is unusual in that it utilizes arrays of polyA signal sequences that are mostly non-canonical. Recombinant human SSR1 protein, fused to His-tag at N-terminus, was expressed in E.coli and purified by using conventional chromatography techniques.

Molecular Weight: 23.1kDa (209aa), confirmed by MALDI-TOF (Molecular size on SDS-PAGE will appear higher)

NCBI Accession: [NP_003135](#)

UniProt: [P43307](#)

Pathways: [ER-Nucleus Signaling](#)

Application Details

Application Notes: Optimal working dilution should be determined by the investigator.

Restrictions: For Research Use only

Handling

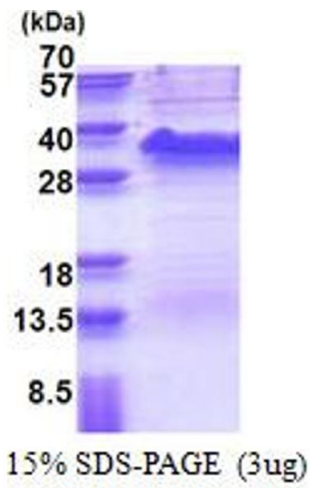
Format: Liquid

Concentration: 0.25 mg/mL

Buffer: Liquid. In 20 mM Tris-HCl(pH 8.0) containing 20 % glycerol, 0.1M NaCl, 1 mM DTT

Storage: 4 °C,-20 °C,-80 °C

Storage Comment: Can be stored at +4C short term (1-2 weeks). For long term storage, aliquot and store at -20C or -70C. Avoid repeated freezing and thawing cycles.



SDS-PAGE

Image 1.