

Datasheet for ABIN6387456
POP7 Protein (AA 1-140) (His tag)



[Go to Product page](#)

1 Image

Overview

Quantity:	100 µg
Target:	POP7
Protein Characteristics:	AA 1-140
Origin:	Human
Source:	Escherichia coli (E. coli)
Protein Type:	Recombinant
Purification tag / Conjugate:	This POP7 protein is labelled with His tag.
Application:	SDS-PAGE (SDS)

Product Details

Sequence:	MGSSHHHHHH SSSLVPRGSH MGSEFMAENR EPRGAVEAEL DPVEYTLRKR LPSRLPRRPN DIYVNMKTDF KAQLARCQKL LDGGARGQNA CSEIYHGLG LAINRAINIA LQLQAGSFGS LQVAANTSTV ELVDELEPET DTREPLTRIR NNSAIHIRVF RVTPK
Purity:	> 90 % by SDS - PAGE

Target Details

Target:	POP7
Alternative Name:	POP7 (POP7 Products)
Background:	: POP7 belongs to the histone-like Alba family. This protein is a component of ribonuclease P, a protein complex that generates mature tRNA molecules by cleaving their 5'-ends. Recombinant human POP7 protein, fused to His-tag at N-terminus, was expressed in E.coli and purified by

Target Details

using conventional chromatography techniques.

Molecular Weight: 18.3kDa(165aa) confirmed by MALDI-TOF

NCBI Accession: [NP_005828](#)

UniProt: [O75817](#)

Application Details

Application Notes: Optimal working dilution should be determined by the investigator.

Restrictions: For Research Use only

Handling

Format: Liquid

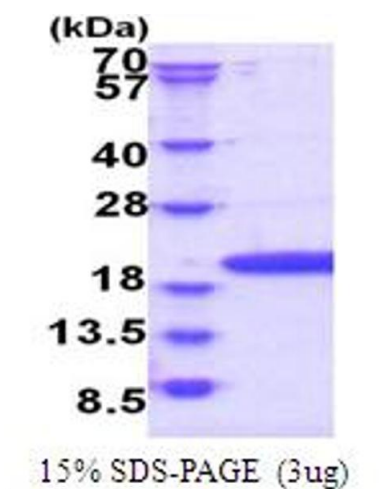
Concentration: 0.25 mg/mL

Buffer: Liquid. In 20 mM Tris-HCl buffer (pH 8.0) containing 0.15M NaCl, 50 % glycerol, 2 mM DTT, 2 mM EDTA

Storage: 4 °C,-20 °C,-80 °C

Storage Comment: Can be stored at +4C short term (1-2 weeks). For long term storage, aliquot and store at -20C or -70C. Avoid repeated freezing and thawing cycles.

Images



SDS-PAGE

Image 1.