

Datasheet for ABIN6387512

## HDGFL1 Protein (AA 1-251) (His tag)



[Go to Product page](#)

### 1 Image

#### Overview

Quantity:	100 µg
Target:	HDGFL1
Protein Characteristics:	AA 1-251
Origin:	Human
Source:	Escherichia coli (E. coli)
Protein Type:	Recombinant
Purification tag / Conjugate:	This HDGFL1 protein is labelled with His tag.
Application:	SDS-PAGE (SDS)

#### Product Details

Sequence:	MGSSHHHHHH SSSLVPRGSH MGSMSAYGMP MYKSGDLVFA KLKGYAHWPA RIEHMTQPNR YQVFFFGTHE TAF LSPKRLF PYKECKEKEFG KPNKRRGFSA GLWEIENNPT VQASDCPLAS EKGSGDGPWP EPEAAEGDED KPTHAGGGGD ELGKPD DDKP TEEKGPLKR SAGDPPEDAP KRPKEAAPDQ EEEAEAERAA EAERAAAAAA ATAVDEESPF LVAVENG SAP SEPGLVCEPP QPEEEELREE EVADEEASQE WHAEAPGGGD RDSL
Purity:	> 95 % by SDS - PAGE

#### Target Details

Target:	HDGFL1
Alternative Name:	HDGFL1 ( <a href="#">HDGFL1 Products</a> )
Background:	HDGFL1 belongs to the HDGF family and contains 1 PWWP domain. Recombinant human

## Target Details

HDGFL1 protein, fused to His-tag at N-terminus, was expressed in E.coli and purified by using conventional chromatography techniques.

Molecular Weight: 29.6 kDa (274aa) confirmed by MALDI-TOF (Molecular size on SDS-PAGE will appear higher)

NCBI Accession: [NP\\_612641](#)

UniProt: [Q5TGJ6](#)

## Application Details

Application Notes: Optimal working dilution should be determined by the investigator.

Restrictions: For Research Use only

## Handling

Format: Liquid

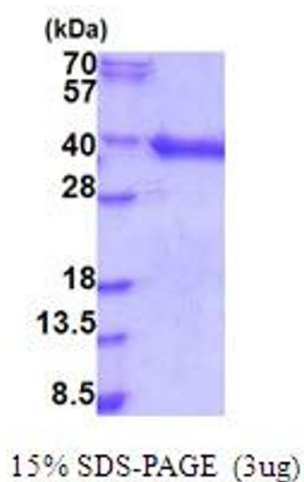
Concentration: 0.25 mg/mL

Buffer: Liquid, In Phosphate buffered saline ( pH 7.4) containing 10 % glycerol

Storage: 4 °C,-20 °C,-80 °C

Storage Comment: Can be stored at +4C short term (1-2 weeks). For long term storage, aliquot and store at -20C or -70C. Avoid repeated freezing and thawing cycles.

## Images



### SDS-PAGE

Image 1.