

Datasheet for ABIN6387772
PTH Protein (AA 32-115)



[Go to Product page](#)

1 Image

Overview

Quantity:	50 µg
Target:	PTH
Protein Characteristics:	AA 32-115
Origin:	Human
Source:	Escherichia coli (E. coli)
Protein Type:	Recombinant
Biological Activity:	Active
Application:	SDS-PAGE (SDS)

Product Details

Sequence:	MSVSEIQLMH NLGKHLNSME RVEWLRKKLQ DVHNFVALGA PLAPRDAGSQ RPRKKEDNVL VESHEKSLGE ADKADVNVLT KAKSQ
Purity:	> 95 % by SDS - PAGE
Endotoxin Level:	< 1.0 EU per 1 microgram of protein (determined by LAL method)
Biological Activity Comment:	Measured by its ability to induce cAMP accumulation in MC3T3/E1 mouse preosteoblast cells. The ED50 for this effect is less than or equal to 50 ng/ml.

Target Details

Target:	PTH
Alternative Name:	PTH (PTH Products)

Target Details

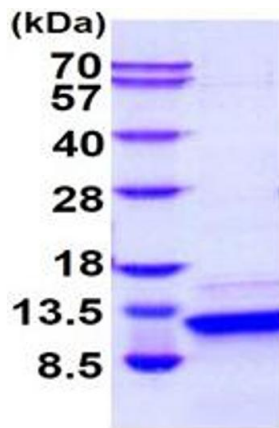
Target Type:	Hormone
Background:	Human parathyroid hormone(hPTH) is an 84 amino acid residue peptide and one of the main regulators in maintenance of calcium homeostasis. It acts primarily on kidney and bone cells stimulating calcium back resorption or calcium mobilization, respectively. The whole mechanism is still under discussion, but low-dose hPTH triggers cyclic AMP-dependent protein kinase in some populations of bone cells bearing PTH receptors, which stimulates the proliferation of osteoblasts. Human parathyroid hormone(amino acids 32-115) was overexpressed in E. coli and purified to apparent homogeneity by using conventional column chromatography techniques
Molecular Weight:	9.55 kDa (85 aa), confirmed by MALDI-TOF
NCBI Accession:	NP_000306
UniProt:	P01270
Pathways:	cAMP Metabolic Process , Regulation of Carbohydrate Metabolic Process

Application Details

Application Notes:	Optimal working dilution should be determined by the investigator.
Comment:	Bioactivity Validated
Restrictions:	For Research Use only

Handling

Format:	Liquid
Concentration:	1 mg/mL
Buffer:	Liquid. In phosphate-buffered Saline(pH 7.4) containing 2 mM EDTA
Storage:	4 °C,-20 °C,-80 °C
Storage Comment:	Can be stored at +4C short term (1-2 weeks). For long term storage, aliquot and store at -20C or -70C. Avoid repeated freezing and thawing cycles.



15% SDS-PAGE (3ug)

SDS-PAGE

Image 1.