

Datasheet for ABIN6387773

Cathepsin L Protein (AA 18-334) (His tag)



[Go to Product page](#)

1 Image

Overview

Quantity:	100 µg
Target:	Cathepsin L (CTSL1)
Protein Characteristics:	AA 18-334
Origin:	Mouse
Source:	Baculovirus infected Insect Cells
Protein Type:	Recombinant
Purification tag / Conjugate:	This Cathepsin L protein is labelled with His tag.
Application:	SDS-PAGE (SDS)

Product Details

Sequence:	TPKFDQTFSA EWHQWKSTHR RLYGTNEEEW RRAIWEKNMR MIQLHNGEYS NGQHGFSEMEM NAFGDMTNEE FRQVVNGYRH QKHKKGRLEFQ EPLMLKIPKS VDWREKGCVT PVKNQGQCGS CWAFSASGCL EGQMFLKTGK LISLSEQNLV DCSHAQGNQG CNGGLMDFAF QYIKENGGLD SEESYPYEAQ DGSCKYRAEF AVANDTGFVD IPQKEKALMK AVATVGPISV AMDASHPSLQ FYSSGIYYEP NCSSKNLDHG VLLVGYYGYEG TDSNKNKYWL VKNSWGSEWG MEGYIKIAKD RDNHCGLATA ASYPVVN
Purity:	> 90% by SDS-PAGE
Endotoxin Level:	< 1 EU per 1µg of protein (determined by LAL method)

Target Details

Target:	Cathepsin L (CTSL1)
---------	---------------------

Target Details

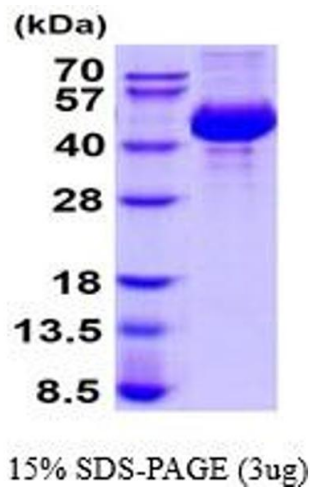
Alternative Name:	Cathepsin L (CTSL1 Products)
Background:	CTSL, also known as cathepsin L1, is a lysosomal cysteine protease expressed in most eukaryotic cells. It plays a major role in intracellular protein catabolism and is potent in degrading collagen, laminin, elastin, as well as alpha-1 protease inhibitor and other structural proteins of basement membranes. Recombinant mouse CTSL, fused to His-tag at C-terminus, was expressed in insect cell and purified by using conventional chromatography techniques.
Molecular Weight:	36.8 kDa (325aa)
NCBI Accession:	NP_034114
UniProt:	P06797
Pathways:	Activation of Innate immune Response , Toll-Like Receptors Cascades

Application Details

Application Notes:	Optimal working dilution should be determined by the investigator.
Restrictions:	For Research Use only

Handling

Format:	Liquid
Concentration:	0.25 mg/mL
Buffer:	Liquid. In Phosphate Buffered Saline (pH 7.4) containing 10 % glycerol.
Storage:	4 °C,-20 °C,-80 °C
Storage Comment:	Can be stored at +2°C to +8°C for 1 week. For long term storage, aliquot and store at -20°C to -80°C. Avoid repeated freezing and thawing cycles.



SDS-PAGE
Image 1.