



[Go to Product page](#)

Datasheet for ABIN6387843
STX1A Protein (AA 1-265)

1 Image

Overview

Quantity:	100 µg
Target:	STX1A
Protein Characteristics:	AA 1-265
Origin:	Human
Source:	Escherichia coli (E. coli)
Protein Type:	Recombinant
Application:	SDS-PAGE (SDS)

Product Details

Sequence: MKDRTQELRT AKDSDDDDDV AVTVDRDRFM DEFFEQVEEI RGFIDKIAEN VEEVKRKHSA
ILASPNPDEK TKEELEELMS DIKKTANKVR SKLKSIEQSI EQEEGLNRSS ADLRIRKTQH
STLSRKFEV MSEYNATQSD YRERCKGRIQ RQLEITGRTT TSEELEDMLE SGNPAIFASG
IIMDSSISKQ ALSEIETRHS EIIKLENSIR ELHDMFMDMA MLVESQGEMI DRIEYNVEHA
VDYVERAVSD TKKAVKYQSK ARKK

Purity: > 95 % by SDS - PAGE

Target Details

Target:	STX1A
Alternative Name:	STX1A (STX1A Products)
Background:	STX1A, also as known as syntaxin 1A, is a synaptic protein implicated in docking of synaptic vesicles at presynaptic active zones. This protein plays a role in hormone and neurotransmitter

Target Details

exocytosis and may mediate Ca²⁺-regulation of exocytosis acrosomal reaction in sperm.
Recombinant human STX1A was expressed in E.coli and purified by using conventional chromatography techniques.

Molecular Weight: 30.7kDa (265aa) confirmed by MALDI-TOF

NCBI Accession: [NP_004594](#)

UniProt: [Q16623](#)

Pathways: [Peptide Hormone Metabolism](#), [Synaptic Membrane](#), [Synaptic Vesicle Exocytosis](#), [Dicarboxylic Acid Transport](#)

Application Details

Application Notes: Optimal working dilution should be determined by the investigator.

Restrictions: For Research Use only

Handling

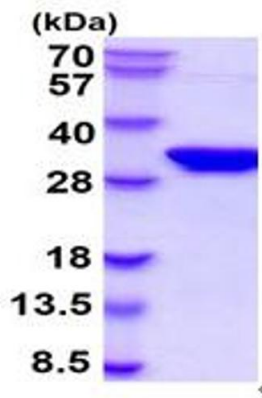
Format: Liquid

Concentration: 1 mg/mL

Buffer: Liquid. In phosphate buffered saline (pH 7.4) containing 10 % glycerol, 1 mM DTT

Storage: 4 °C,-20 °C,-80 °C

Storage Comment: Can be stored at +4C short term (1-2 weeks). For long term storage, aliquot and store at -20C or -70C. Avoid repeated freezing and thawing cycles.



15% SDS-PAGE (3ug)

SDS-PAGE

Image 1.