

Datasheet for ABIN6387862

Renin Protein (REN) (AA 24-406) (His tag)



[Go to Product page](#)

1 Image

Overview

Quantity:	50 µg
Target:	Renin (REN)
Protein Characteristics:	AA 24-406
Origin:	Human
Source:	Baculovirus infected Insect Cells
Protein Type:	Recombinant
Purification tag / Conjugate:	This Renin protein is labelled with His tag.
Application:	SDS-PAGE (SDS)

Product Details

Sequence:	<p>LPTDTTTFKR IFLKRMPsir ESLKergvDM ARLGPEWSQP MKRLTLGNTT SSVILTNYMD</p> <p>TQYYGEIGIG TPPQTFKWWF DTGSSNVWVP SSKCSRlyTA CVYHKLFDAS DSSSYKHNGT</p> <p>ELTLRYSTGT VSGFLSQDII TVGGITVTQM FGEVTEMPAL PFMLAEFDGV VGMGFIEQAI</p> <p>GRVTPIFDNI ISQGVLKEDV FSFYNRDSE NSQSLGGQIV LGGSDPQHYE GNFHYINLIK</p> <p>TGVWQIQMKG VSVGSSTLLC EDGCLALVDT GASyISGSTS SIEKLMEALG AKKRLFDYVV</p> <p>KCNEGPTLPD ISFHLGGKEY TLTSADYVFQ ESYSSKKLCT LAIHAMDIPP PTGPTWALGA</p> <p>TFIRKFYTEF DRRNNRIGFA LAR</p>
Purity:	> 90% by SDS-PAGE
Endotoxin Level:	< 1 EU per 1 µg of protein (determined by LAL method)

Target Details

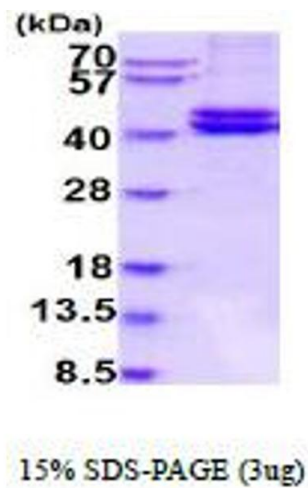
Target:	Renin (REN)
Alternative Name:	Renin (REN Products)
Background:	<p>REN, also known as renin, is a member of the peptidase A1 family. It is synthesized by the juxtaglomerular cells of the kidney in response to decreased blood pressure and sodium concentration. It is a highly specific endopeptidase, whose only known function is to generate angiotensin I from angiotensinogen in the plasma, initiating a cascade of reactions that produce an elevation of blood pressure and increased sodium retention by the kidney.</p> <p>Recombinant human REN, fused to His-tag at C-terminus, was expressed in insect cell and purified by using conventional chromatography techniques</p>
Molecular Weight:	43.3 kDa (391aa)
NCBI Accession:	NP_000528
UniProt:	P00797
Pathways:	ACE Inhibitor Pathway , Peptide Hormone Metabolism , Regulation of Systemic Arterial Blood Pressure by Hormones , Feeding Behaviour

Application Details

Application Notes:	Optimal working dilution should be determined by the investigator.
Restrictions:	For Research Use only

Handling

Format:	Liquid
Concentration:	0.25 mg/mL
Buffer:	Liquid. In Phosphate Buffered Saline (pH 7.4) containing 10 % glycerol.
Storage:	4 °C,-20 °C,-80 °C
Storage Comment:	Can be stored at +2°C to +8°C for 1 week. For long term storage, aliquot and store at -20°C to -80°C. Avoid repeated freezing and thawing cycles.



SDS-PAGE
Image 1.