

Datasheet for ABIN6387867

CD90 Protein (THY1) (AA 20-130) (His tag)



[Go to Product page](#)

1 Image

Overview

Quantity:	100 µg
Target:	CD90 (THY1)
Protein Characteristics:	AA 20-130
Origin:	Human
Source:	Baculovirus infected Insect Cells
Protein Type:	Recombinant
Purification tag / Conjugate:	This CD90 protein is labelled with His tag.
Application:	SDS-PAGE (SDS)

Product Details

Sequence:	QKVTSLTACL VDQSLRLDCR HENTSSSPIQ YEFSLTRETK KHVLFGTGVV PEHTYRSRTN FTSKYNMKVL YLSAFTSKDE GTYTCALHHS GHSPPISSQN VTVLRDKLVK C
Purity:	> 95% by SDS-PAGE
Endotoxin Level:	< 1 EU per 1 µg of protein (determined by LAL method)

Target Details

Target:	CD90 (THY1)
Alternative Name:	CD90/Thy1 (THY1 Products)
Background:	THY1, as known as Thy-1 membrane glycoprotein, is a cell membrane protein which contains 1Ig-like V-type (immunoglobulin-like) domain. This protein is a member of the immunoglobulin superfamily of adhesion molecules with constitutive expression on fibroblast cells. It can be

Target Details

used as a marker for a variety of stem cells and for the axonal processes of mature neurons. Also, this protein led to some of the initial biochemical description and characterization of a vertebrate glycoposphatidylinositol (GPI) anchor and also the first demonstration of tissue specific differential glycosylation. Recombinant human THY1, fused to His-tag at C-terminus, was expressed in insect cell and purified by using conventional chromatography techniques.

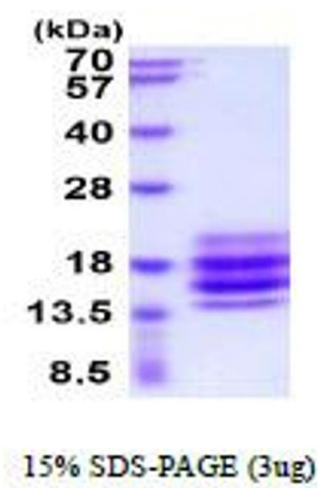
Molecular Weight:	13.3 kDa (117aa)
NCBI Accession:	NP_006279
UniProt:	P04216
Pathways:	Cell-Cell Junction Organization

Application Details

Application Notes:	Optimal working dilution should be determined by the investigator.
Restrictions:	For Research Use only

Handling

Format:	Liquid
Concentration:	0.25 mg/mL
Buffer:	Liquid. In Phosphate Buffered Saline (pH 7.4) containing 10 % glycerol.
Storage:	4 °C,-20 °C,-80 °C
Storage Comment:	Can be stored at +2°C to +8°C for 1 week. For long term storage, aliquot and store at -20°C to -80°C. Avoid repeated freezing and thawing cycles.



SDS-PAGE
Image 1.