

Datasheet for ABIN6387914
NCR1 Protein (AA 17-255) (hlgG-His-tag)



[Go to Product page](#)

1 Image

Overview

Quantity:	100 µg
Target:	NCR1
Protein Characteristics:	AA 17-255
Origin:	Mouse
Source:	Baculovirus infected Insect Cells
Protein Type:	Recombinant
Purification tag / Conjugate:	This NCR1 protein is labelled with hlgG-His-tag.
Application:	SDS-PAGE (SDS)

Product Details

Sequence:	ADLQRINTEK ETLPKPIWA KPSIMVTNGN SVNIWCQGAQ SASEYQLYFE GSFFALERPK PSRSMNKVRF FISQMTSHTA GIYTIFYQSG ELWSKSSNPL KLVVTGLYDT PNLWVYPRPE VTLGENVTFF CQLKTATSKF FLLKERGSNH IQNKYGNIA EFPMGPVTRA HRGTYRCFGS YNDYAWSFPS EPVLLITGG VENSSLAPTD PTSSLDYWEF DLSTNESGLQ KDSAFWDHTT QNLEPKSCDK THTCPAP ELLGGPSVFL FPPKPKDTLM ISRTPEVTCV VVDVSHEDPE VKFNWYVDGV EVHNAKTKPR EEQYNSTYRV VSVLTVLHQD WLNGKEYKCK VSNKALPAPI EKTISKAKGQ PREPQVYTLPSRDELTKNQ VSLTCLVKGF YPSDIAVEWE SNGQPENNYK TTPPVLDSDG SFFLYSKLTV DKSRWQQGNV FSCSVMHEAL HNHYTQKSLSLSPGKHHHHH H
Purity:	> 85 % by SDS - PAGE
Endotoxin Level:	< 1.0 EU per 1 microgram of protein (determined by LAL method)

Target Details

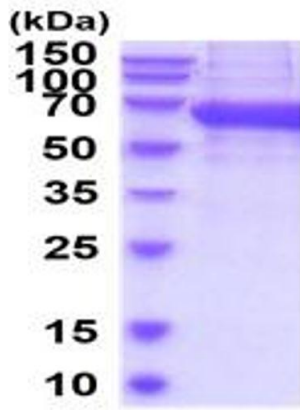
Target:	NCR1
Alternative Name:	Ncr1 (NCR1 Products)
Background:	Ncr1, as known as natural cytotoxicity triggering receptor 1, is a natural killer cell p46-related protein. This protein, along with NKp30 and NKp44, are activating receptors that belongs to the natural cytotoxicity receptor family. These receptors are expressed by NK cells in the peripheral blood and spleen expresses NKp46 in both resting and activated states. Also, it may contribute to the increased efficiency of activated NK cells to mediate tumor cell lysis. Recombinant mouse Ncr1, fused to hlgG-His-tag at C-terminus, was expressed in insect cell and purified by using conventional chromatography techniques.
Molecular Weight:	54.4kDa (481aa) 50-70kDa (SDS-PAGE under reducing conditions.)
NCBI Accession:	NP_034876
UniProt:	Q8C567
Pathways:	Regulation of Leukocyte Mediated Immunity

Application Details

Application Notes:	Optimal working dilution should be determined by the investigator.
Restrictions:	For Research Use only

Handling

Format:	Liquid
Concentration:	0.25 mg/mL
Buffer:	Liquid. In Phosphate Buffered Saline (pH 7.4) containing 10 % glycerol.
Storage:	4 °C,-20 °C,-80 °C
Storage Comment:	Can be stored at +4C short term (1-2 weeks). For long term storage, aliquot and store at -20C or -70C. Avoid repeated freezing and thawing cycles.



15% SDS-PAGE (3ug)

SDS-PAGE

Image 1.