

Datasheet for ABIN6387935
PLAT Protein (AA 311-562) (His tag)



[Go to Product page](#)

1 Image

Overview

Quantity:	100 µg
Target:	PLAT
Protein Characteristics:	AA 311-562
Origin:	Human
Source:	Baculovirus infected Insect Cells
Protein Type:	Recombinant
Purification tag / Conjugate:	This PLAT protein is labelled with His tag.
Application:	SDS-PAGE (SDS)

Product Details

Sequence:	QEIHFRRG ARSYQVICRD EKTQMIYQQH QSWLRPVLRS NRVEYCWCNS GRAQCHSVPV KSCSEPRCFN GGTCQQALYF SDFVCQPEG FAGKCEIDT RATCYEDQGI SYRGTWSTAE SGAECTNWN SALAQPYSG RRPDAIRLGL GNHNYCRNPD RDSKPWCYVF KAGKYSSEFC STPACSEGNS DCYFGNGSAY RGTHSLTESG ASCLPWNSMI LIGKVYTAQN PSAQALGLGK HNYCRNPDGD AKPWCHVLKN RRLTWEYCDV PSCSTCGLRQ YSQPFRIKG GLFADIASHP WQAAIFAKHR RSPGERFLCG GILISSCWIL SAAHCFQERF PPHHLTIVIL RTYRWWPGEE EQKFEVEKYI VHKEFDDDTY DNDIALQLK SDSSRCAQES SVVRTVCLPP ADLQLPDWTE CELSGYGKHE ALSPFYSERL KEAHVRLYPS SRCTSQHLLN RTVTDNMLCA GDTRSGGPQA NLHDACQGDS GGPLVCLNDG RMTLVGIISW GLGCGQKDVP GVYTKVTNYL DWIRDNMRPH HHHHH
Purity:	> 90 % by SDS - PAGE
Endotoxin Level:	< 1.0 EU per 1 microgram of protein (determined by LAL method)

Target Details

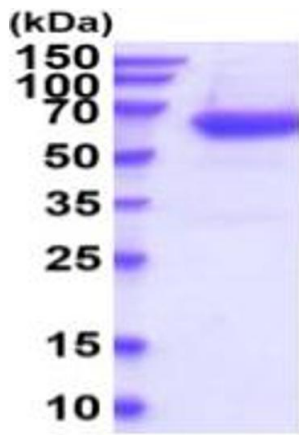
Target:	PLAT
Alternative Name:	PLAT (PLAT Products)
Background:	PLAT, as known as tissue-type plasminogen activator isoform 1, is a secreted serine protease synthesized by endothelial cells. This protein is secreted as a single chain polypeptide precursor which is cleaved in turn by plasmin. Also, it plays a role clinical medicine to treat stroke in cell migration and tissue remodeling. It is implicated in normal neural function and is suggested as a regulatory molecule in neurodegenerative diseases. Recombinant human PLAT, fused to His-tag at C-terminus, was expressed in insect cell and purified by using conventional chromatography techniques.
Molecular Weight:	61.3kDa (545aa) 50-70kDa (SDS-PAGE under reducing conditions.)
NCBI Accession:	NP_000921
UniProt:	P00750
Pathways:	Autophagy , Smooth Muscle Cell Migration , Platelet-derived growth Factor Receptor Signaling , SARS-CoV-2 Protein Interactome

Application Details

Application Notes:	Optimal working dilution should be determined by the investigator.
Restrictions:	For Research Use only

Handling

Format:	Liquid
Concentration:	0.25 mg/mL
Buffer:	Liquid. In 50 mM MES buffer (pH 5.5) containing 40 % glycerol, 5 mM CaCl ₂ , 1 mM DTT, 0.5M NaCl.
Storage:	4 °C,-20 °C,-80 °C
Storage Comment:	Can be stored at +4C short term (1-2 weeks). For long term storage, aliquot and store at -20C or -70C. Avoid repeated freezing and thawing cycles.



15% SDS-PAGE (3ug)

SDS-PAGE

Image 1.