

Datasheet for ABIN6387936

Cathepsin B Protein (CTSB) (AA 18-339) (His tag)



[Go to Product page](#)

1 Image

Overview

Quantity:	50 µg
Target:	Cathepsin B (CTSB)
Protein Characteristics:	AA 18-339
Origin:	Mouse
Source:	Baculovirus infected Insect Cells
Protein Type:	Recombinant
Biological Activity:	Active
Purification tag / Conjugate:	This Cathepsin B protein is labelled with His tag.
Application:	SDS-PAGE (SDS), Enzyme Activity Assay (EAA)

Product Details

Sequence:	<p> HDKPSFHPLS DDLINYINKQ NTTWQAGRNF YNVDISYLKK LCGTVLGGPK LPGRVAFGED IDLPETFDAR EQWSNCPTIG QIRDQGSCGS CWAFGAVEAI SDRTCIGHTNG RVNVEVSAED LLTCCGIQCG DGCNGGYPSG AWSFWTKKGL VSGGVYNHSHV GCLPYTIPPC EHHVNGSRPP CTGEGDTPRC NKSCEAGYSP SYKEDKHFGY TSYSVSNSVK EIMAEIYKNG PVEGAFTVFS DFLTYKSGVY KHEAGDMMGG HAIRILGWGV ENGVPYWLAA NSWNLDWGDN GFFKILRGEN HCGIESEIVA GIPRTDQYWG RFLEHHHHHHH </p>
Purity:	> 90% by SDS-PAGE
Endotoxin Level:	< 1 EU per 1ug of protein (determined by LAL method)
Biological Activity Comment:	Specific activity is > 2,000pmol/min/ug and is defined as the amount of enzyme that hydrolyze 1pmole of Z-Arg-Arg-AMC to Z-Arg-Arg and AMC per minute at pH 6.0 at 37C.

Target Details

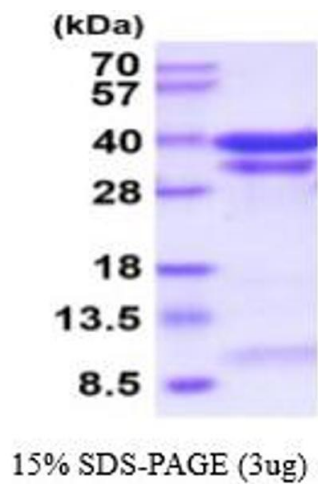
Target:	Cathepsin B (CTSB)
Alternative Name:	Cathepsin B (CTSB Products)
Background:	CTSB, also known as cathepsin B preproprotein, is a papain-family cysteine protease that is normally located in lysosomes. It has the ability to degrade several extracellular matrix components at both neutral and acidic pH and has been implicated in the progression of several human and rodent tumors progression and arthritis. Recombinant mouse CTSB, fused to His-tag at C-terminus, was expressed in insect cell and purified by using conventional chromatography techniques.
Molecular Weight:	36.4 kDa (330aa)
NCBI Accession:	NP_031824
UniProt:	P10605
Pathways:	Activation of Innate immune Response , Toll-Like Receptors Cascades

Application Details

Application Notes:	Optimal working dilution should be determined by the investigator.
Comment:	Bioactivity Validated
Restrictions:	For Research Use only

Handling

Format:	Liquid
Concentration:	0.5 mg/mL
Buffer:	Liquid. In Phosphate Buffered Saline (pH 7.4) containing 10 % glycerol.
Storage:	4 °C,-20 °C,-80 °C
Storage Comment:	Can be stored at +2°C to +8°C for 1 week. For long term storage, aliquot and store at -20°C to -80°C. Avoid repeated freezing and thawing cycles.



SDS-PAGE
Image 1.