

Datasheet for ABIN6387960  
**MFGE8 Protein (AA 23-426) (His tag)**



[Go to Product page](#)

1 Image

## Overview

Quantity:	50 µg
Target:	MFGE8
Protein Characteristics:	AA 23-426
Origin:	Human
Source:	Baculovirus infected Insect Cells
Protein Type:	Recombinant
Purification tag / Conjugate:	This MFGE8 protein is labelled with His tag.
Application:	SDS-PAGE (SDS)

## Product Details

Sequence:	ADLASGDFCD SSLCLNGGTC LTGQDNDIYC LCPEGFTGLV CNETERGPCS PNPCYNDAKC LVTLDTQRGD IFTEYICQCP VGYSGIHCET GCSTQLGMEG GAIADSQISA SSVYMGFMGL QRWGPELARL YRTGIVNAWT ASNYDSKPWI QVNLLRKMRV SGVMTQGASR AGRAEYLKTF KVAAYSLDGRK FEFIQDESGG DKEFLGNLDN NSLKVNMFNP TLEAQYIKLY PVSCHRGCTL RFELLGCELH GCSEPLGLKN NTIPDSQMSA SSSYKTWNLR AFGWYPHLGR LDNQGKINAW TAQSNSAKEW LQVDLGTQRQ VTGIITQGAR DFGHIQYVAS YKVAHSDDGV QWTVYEEQGS SKVFQGNLDN NSHKKNIFEK PFMARYVRVL PVSWHNRITL RLELLGCHHH HHH
Purity:	> 90 % by SDS - PAGE
Endotoxin Level:	< 1.0 EU per 1 microgram of protein (determined by LAL method)

## Target Details

---

Target:	MFGE8
Alternative Name:	Mfge8 ( <a href="#">MFGE8 Products</a> )
Background:	Mfge8, also known as Milk fat globule-EGF factor 8 protein, is pleiotropic secreted glycoprotein that promotes mammary gland morphogenesis, angiogenesis, and tumor progression. It also plays an important role in tissue homeostasis and the prevention of inflammation. It functions as a bridge between phosphatidylserine on apoptotic cells and Integrin alpha V beta 3 on phagocytes, leading to the clearance of apoptotic debris. Recombinant mouse Mfge8 protein, fused to His-tag at C-terminus, was expressed in insect cell and purified by using conventional chromatography techniques.
Molecular Weight:	46.0kDa (413aa) 40-57KDa (SDS-PAGE under reducing conditions.)
NCBI Accession:	<a href="#">NP_001038954</a>
Pathways:	<a href="#">SARS-CoV-2 Protein Interactome</a>

## Application Details

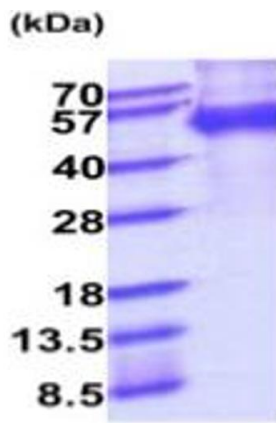
---

Application Notes:	Optimal working dilution should be determined by the investigator.
Restrictions:	For Research Use only

## Handling

---

Format:	Liquid
Concentration:	0.25 mg/mL
Buffer:	Liquid. In Phosphate Buffered Saline ( pH 7.4) containing 10 % glycerol.
Storage:	4 °C,-20 °C,-80 °C
Storage Comment:	Can be stored at +4C short term (1-2 weeks). For long term storage, aliquot and store at -20C or -70C. Avoid repeated freezing and thawing cycles.



15% SDS-PAGE (3ug)

**SDS-PAGE**

Image 1.