

Datasheet for ABIN6388008

PGP Protein (AA 1-321) (His tag)[Go to Product page](#)**1** Image

Overview

Quantity:	100 µg
Target:	PGP
Protein Characteristics:	AA 1-321
Origin:	Human
Source:	Escherichia coli (E. coli)
Protein Type:	Recombinant
Biological Activity:	Active
Purification tag / Conjugate:	This PGP protein is labelled with His tag.
Application:	SDS-PAGE (SDS)

Product Details

Sequence:	MGSSHHHHHH SSGLVPRGSH MGSHEMAAAEA GGDDARCVRL SAERAQALLA DVDTLFFDCD GVLWRGETAV PGAPEALRAL RARGKRLGFI TNNSSKTRAA YAEKLRLRGF GGPAGPGASL EVFGTAYCTA LYLRQLAGA PAPKAYVLGS PALAAELEAV GVASVGVGPE PLQGEKPGDW LHAPLEPDVR AVVVGFDPHF SYMKLTKALR YLQQPGCLLV GTNMDNRLPL ENGRFIAGTG CLVRAVEMAA QRQADIIGKP SRFIFDCVSQ EYGINPERTV MVGDRLDTDI LLGATCGLKT ILTLTGSTL GDVKNQESD CVSKKKMVPD FYVDSIADLL PALQG
Purity:	> 95 % by SDS - PAGE
Biological Activity Comment:	Specific activity is > 3,000 units/mg, and is defined as the amount of enzyme that hydrolyze 1.0 nmole of p-nitrophenyl phosphate (pNPP) per minute at pH 7.5 at 37C.

Target Details

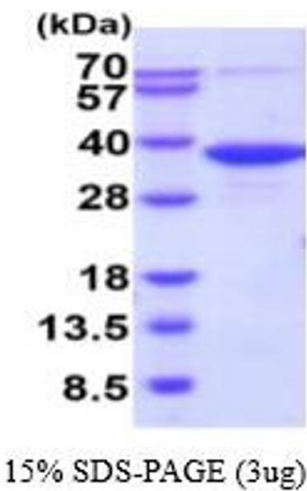
Target:	PGP
Alternative Name:	PGP (PGP Products)
Background:	Phosphoglycolate phosphatase, also known as PGP, is detected in all tissues including red cells, lymphocytes and cultured fibroblasts (at protein level). The catalytic activity of PGP is 2-phosphoglycolate + H ₂ O = glycolate + phosphate. The highest activities occur in skeletal muscle and cardiac muscle. Recombinant human PGP protein, fused to His-tag at N-terminus, was expressed in E.coli and purified by using conventional chromatography techniques.
Molecular Weight:	36.5 kDa (345aa) confirmed by MALDI-TOF
NCBI Accession:	NP_001035830
UniProt:	A6NDG6

Application Details

Application Notes:	Optimal working dilution should be determined by the investigator.
Comment:	Bioactivity Validated
Restrictions:	For Research Use only

Handling

Format:	Liquid
Concentration:	0.5 mg/mL
Buffer:	Liquid. In 20 mM Tris-HCl buffer (pH 8.0) containing 0.15M NaCl, 10 % glycerol, 1 mM DTT
Storage:	4 °C,-20 °C,-80 °C
Storage Comment:	Can be stored at +4C short term (1-2 weeks). For long term storage, aliquot and store at -20C or -70C. Avoid repeated freezing and thawing cycles.



SDS-PAGE
Image 1.