

Datasheet for ABIN6388017

Kallikrein 15 Protein (AA 17-256) (His tag)[Go to Product page](#)**1** Image

Overview

Quantity:	50 µg
Target:	Kallikrein 15 (KLK15)
Protein Characteristics:	AA 17-256
Origin:	Human
Source:	Baculovirus infected Insect Cells
Protein Type:	Recombinant
Purification tag / Conjugate:	This Kallikrein 15 protein is labelled with His tag.
Application:	SDS-PAGE (SDS)

Product Details

Sequence:	ADPQDGDKLL EGDECAPHSQ PWQVALYERG RFNCGASLIS PHWVLSAAHC QSRFMRVRLG EHNLRKRDGP EQLRTTSRVI PHPRYEARSH RNDIMLLRLV QPARLNPQVR PAVLPTRCPH PGEACVSWG GLVSHNEPGT AGSPRSQVSL PDTLHCANIS IISDTSCKS YPGRLTNTMV CAGAEGRGAE SCEGDSGGPL VCGGILQGIV SWGDVPCDNT TKPGVYTKVC HYLEWIRETM KRNHHHHHH
Purity:	> 80 % by SDS - PAGE
Endotoxin Level:	< 1.0 EU per 1 microgram of protein (determined by LAL method)

Target Details

Target:	Kallikrein 15 (KLK15)
Alternative Name:	KLK15 (KLK15 Products)

Target Details

Background: KLK15, also known as kallikrein-15 isoform 4, is one of the fifteen kallikrein subfamily members located in a cluster on chromosome 19. This protein contains multiple polyadenylation sites and alternative splicing results in multiple transcript variants encoding distinct isoforms. Also, growing evidence suggests that many kallikreins are implicated in carcinogenesis and some have potential as novel cancer and other disease biomarkers. In prostate cancer, it has increased expression, which indicates its possible use as a diagnostic or prognostic marker for prostate cancer. Recombinant human KLK15, fused to His-tag at C-terminus, was expressed in insect cell and purified by using conventional chromatography techniques.

Molecular Weight: 27.4kDa (249aa) 28-40kDa (SDS-PAGE under reducing conditions.)

NCBI Accession: [NP_059979](#)

UniProt: [Q9H2R5](#)

Pathways: [Complement System](#)

Application Details

Application Notes: Optimal working dilution should be determined by the investigator.

Restrictions: For Research Use only

Handling

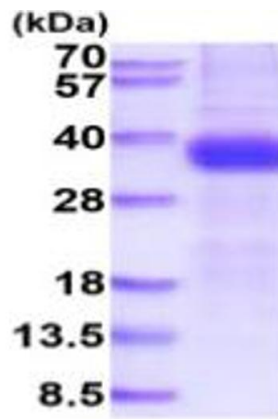
Format: Liquid

Concentration: 0.25 mg/mL

Buffer: Liquid. In Phosphate Buffered Saline (pH 7.4) containing 10 % glycerol.

Storage: 4 °C,-20 °C,-80 °C

Storage Comment: Can be stored at +4C short term (1-2 weeks). For long term storage, aliquot and store at -20C or -70C. Avoid repeated freezing and thawing cycles.



15% SDS-PAGE (3ug)

SDS-PAGE

Image 1.