

Datasheet for ABIN6388021  
**GFRA1 Protein (AA 25-430) (hIgG-His-tag)**



[Go to Product page](#)

1 Image

## Overview

Quantity:	50 µg
Target:	GFRA1
Protein Characteristics:	AA 25-430
Origin:	Rat
Source:	Baculovirus infected Insect Cells
Protein Type:	Recombinant
Purification tag / Conjugate:	This GFRA1 protein is labelled with hIgG-His-tag.
Application:	SDS-PAGE (SDS)

## Product Details

Sequence:	<p>DRLDCVKASD QCLKEQSCST KYRTLRLQCVA GKETNFSLTS GLEAKDECRS AMEALKQKSL YNCRCRGMK KEKNCLRIYW SMYQSLQGND LLEDSPYEPV NSRLSDIFRA VPFISDVFQQ VEHISKGNNC LDAAKACNLD DTCKKYRSAY ITPCTTSMNS EVCNRRKCHK ALRQFFDKVP AKHSYGMLFC SCRDIATER RRQTIVPVCS YEERERPNCL SLQDCKTNY ICRSRLADFF TNCQPESRSV SNCLKENYAD CLLAYSGLIG TVMTPNYVDS SSLSVAPWCD CSNSGNDLED CLKFLNFFKD NTCLKNAIQA FGNGSDVTMW QPAPPVQTTT ATTTAFRVK NKPLGPAGSE NEIPTHVLPP CANLQAQKLK SNVSGSTHLC LSDSDFGKDG LAGASSLEPK SCDKTHTCPP CPAPPELLGGP SVFLFPPKPK DTLMISRTPE VTCVVVDVSH EDPEVKFNWY VDGVEVHNAK TKPREEQYNS TYRVVSVLTV LHQDWLNGKE YKCKVSNKAL PAPIEKTISK AKGQPREPQV YTLPPSRDEL TKNQVSLTCL VKGFYPSDIA VEWESNGQPE NNYKTTTPVL DSDGSFFLYS KLTVDKSRWQ QGNVFSCSVM HEALHNHYTQ KSLSLSPGKH HHHHH</p>
Purity:	> 85 % by SDS - PAGE

## Product Details

---

Endotoxin Level: < 1.0 EU per 1 microgram of protein (determined by LAL method)

## Target Details

---

Target: GFRA1

Alternative Name: Gfra1 ([GFRA1 Products](#))

Background: Gfra1, also known as GDNF family receptor alpha-1, is a member of the GDNF receptor family. It is a glycosyl-phosphatidylinositol(GPI)-linked cell surface receptor for both Glial cell line-derived growth factor (GDNF), neurturin (NTN), and mediates activation of the RET tyrosine kinase receptor. This protein is a potent survival factor for central and peripheral neurons, and is essential for the development of kidneys and the enteric nervous system. Recombinant rat Gfra1 protein, fused to hlgG-His-tag at C-terminus, was expressed in insect cell and purified by using conventional chromatography techniques.

Molecular Weight: 72.3kDa (645aa) 70-100KDa (SDS-PAGE under reducing conditions.)

NCBI Accession: [NP\\_037091](#)

UniProt: [Q62997](#)

## Application Details

---

Application Notes: Optimal working dilution should be determined by the investigator.

Restrictions: For Research Use only

## Handling

---

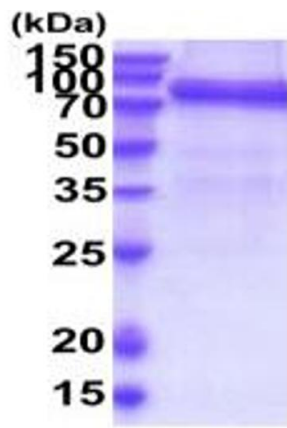
Format: Liquid

Concentration: 0.25 mg/mL

Buffer: Liquid. In Phosphate Buffered Saline ( pH 7.4) containing 10 % glycerol.

Storage: 4 °C,-20 °C,-80 °C

Storage Comment: Can be stored at +4C short term (1-2 weeks). For long term storage, aliquot and store at -20C or -70C. Avoid repeated freezing and thawing cycles.



15% SDS-PAGE (3ug)

SDS-PAGE

Image 1.